

WINTER WEIGHT SEASON 2025-2026

Twenty-first Order – 2026

Minister's Order Pursuant to section 35 of The Highways and Transportation Act, 1997, The Vehicle Weight and Dimension Regulations, 2010, permit heavier weights on public highways during the Winter Weight Season.

The Winter Weight Season is defined in s. 2 (ggg) of the regulations as commencing on November 16 of each year and ending on March 14 of the following year.

Section 2(2) of the regulations states that if the Minister considers it necessary to protect a public highway, the Minister may issue an order under section 35 of the Act restricting the Winter Weight Season for the highways mentioned in the order for the period specified in the order.

Pursuant to section 35 of "The Highways and Transportation Act, 1997" it is hereby ordered that, **effective 12:01 am Monday January 26, 2026.**

Rural Municipalities, that have opted out of the Ministries Winter Weight season will not appear in the Order.

No changes from the previous Winter Weight Orders 11, 12, 13, 14, 15, 16, 17, 18, 19 & 20.

Signed on behalf of the Minister on this 23rd day of January 2026.



Lana Eering
Government of Saskatchewan
Ministry of Highways
Manager, Highway Hotline/Emergency Planning Officer

WINTER WEIGHT SEASON 2025-2026

The Winter Weight Season **is in effect** for the following Provincial Highways:

MINISTER'S ORDER No: 80-2024-WI2-PILOT

ORDER for Increasing Weight Designation on Provincial Highway No. 80.

Pursuant to section 35.1 of *The Highways and Transportation Act, 1997*, the Minister hereby Orders: effective each year during the officially designated winter weight season for the Yorkton District effective until March 15, 2027; this Order authorizes any person, vehicle or class of vehicles to operate at the weights set for primary highways by *The Vehicle Weight and Dimension Regulations, 2010*, on Provincial Highway No. 80 from its junction with Provincial Highway No. 16 to its junction with Provincial Highway No. 10.

Outside of the designated winter weight season Provincial Highway No. 80 will revert back to a 8,000 kilogram restriction by Minister's Order signed July 6, 2001. **The 15 Kilometre Rule does not apply under the Order.**

MINISTER'S ORDER No: 49-2024-WI3-PILOT

ORDER for Increasing Weight Designation on Provincial Highway No. 49.

Pursuant to section 35.1 of *The Highways and Transportation Act, 1997*, the Minister hereby Orders: effective beginning December 15, 2024 and ending March 15, 2025,

- beginning June 15 2025 and ending March 15, 2026,
- beginning June 15 2026 and ending March 15, 2027,
- beginning June 15 2027 and ending March 15, 2028,
- and beginning June 15 and ending March 15, 2029.

this Order authorizes any person, vehicle or class of vehicles to operate at the weights set for primary highways *The Vehicle Weight and Dimension Regulations, 2010*, on Provincial Highway No. 49 from its junction with Provincial Highway No. 8, near Pelly, eastward to the Saskatchewan/Manitoba provincial border. **The 15 Kilometre Rule does not apply under the Order.**

No. 1 From Manitoba Border to Alberta Border
No. 2 From U.S. Border to Rockglen
No. 2 From Rockglen to Liberty
No. 2 From St. Louis to Weyakwin
No. 2 From Weyakwin to La Ronge
No. 3 From Manitoba Border to Kinistino
No. 3 From Kinistino to Jct Hwy 4
No. 3 Jct Hwy 4 to Jct Hwy 26
No. 3 Jct Hwy 26 to Jct Hwy 17
No. 4 From U.S. Border to Saskatchewan Landing
No. 4 From Saskatchewan Landing to Glaslyn
No. 4 From Glaslyn to Jct Hwy 224
No. 5 From Manitoba Border to Quill Lake
No. 5 From Quill Lake to Saskatoon
No. 6 From U.S. Border to Raymore
No. 6 From Raymore to Naicam
No. 6 From Naicam to Jct Hwy 55
No. 7 From Saskatoon to Delisle
No. 7 From Delisle to Alberta Border
No. 8 From U.S. Border to North Jct Hwy 22
No. 8 From South Jct 22 to Forest Boundary* (Norquay to Swan Plain – 8,000 kgs if above -6 degrees)
No. 9 From U.S. Border to Jct Hwy 1
No. 9 From Jct Hwy 983 to Manitoba Border
No. 10 From Manitoba Border to Balcarres
No. 10 From Balcarres to Balgonie
No. 11 From Regina to Davidson

No. 11 From Davidson to MacDowall
No. 11 From MacDowall to Prince Albert
No. 12 From Saskatoon to Blaine Lake
No. 12 From Blaine Lake to Shell Lake
No. 13 From Manitoba Border to East Jct Hwy 36
No. 13 From East Jct 36 to Limerick
No. 13 From Limerick to Alberta Border
No. 14 From Saskatoon to Asquith
No. 14 From Asquith to Alberta Border
No. 15 From Jct Hwy 9 to Jct Hwy 6
No. 15 From Raymore to Jct Hwy 20
No. 15 From Jct Hwy 20 to Jct Hwy 4
No. 15 From Jct Hwy 42 to Jct Hwy 4
No. 16 From Manitoba Border to Dafoe
No. 16 From Jct Hwy 6 to Langham
No. 16 From Langham to Lloydminster
No. 17 From Jct Hwy 14 to Onion Lake
No. 19 From Jct Hwy 44 to Jct Hwy 15
No. 18 From Manitoba Border to Jct Hwy 39
No. 18 From Jct Hwy 47 to North Jct Hwy 6
No. 18 From South Jct Hwy 6 to East Jct Hwy 36
No. 18 From West Jct Hwy 36 to Rockglen
No. 18 From Jct Hwy 2 to Val Marie
No. 18 From Jct Hwy 4 to Jct Hwy 13
No. 19 From Chaplin to Jct Hwy 44
No. 19 From Jct Hwy 18 to Jct Hwy 1

WINTER WEIGHT SEASON 2025-2026

No. 20 From South Jct Hwy 15 to Jct Hwy 320	No. 52 From Yorkton to Jct Hwy 15
No. 20 From Jct Hwy 320 to Jct Hwy 3	No. 54 From Jct Hwy 11 to Regina Beach
No. 21 From U.S. Border to Jct Hwy 44	No. 55 From Jct Hwy 9 to Smeaton
No. 20 From Lumsden to South Jct Hwy 15	No. 55 From Smeaton to Green Lake
No. 21 From Glidden to South Jct Hwy 303	No. 55 From Green Lake to Alberta Border
No. 21 From South Jct Hwy 303 to Meadow Lake Park	No. 56 From Indian Head to Katepwa
No. 22 From Manitoba Border to Jct Hwy 10	No. 56 From Katepwa to Jct Hwy 210
No. 22 From Jct Hwy 35 to Jct Hwy 20	No. 57 From Manitoba Border to Jct Hwy 5
No. 23 From Jct Hwy 9 to Somme	No. 58 From Jct Hwy 18 to Jct Hwy 43
No. 23 From Somme to Jct Hwy 38	No. 58 From North Limits of Gravelbourg to Jct Hwy 1
No. 23 From Jct Hwy 38 to Jct Hwy 55	No. 60 From Pike Lake to Jct Hwy 7
No. 24 From Spiritwood to Chitek Lake	No. 80 From Esterhazy to Churchbridge
No. 25 From Jct Hwy 3 to Jct Hwy 2	No. 99 From Craven to Jct Hwy 6
No. 26 From Jct Hwy 4 to Vawn	No. 102 From La Ronge to Southend
No. 26 From Vawn to Goodsoil	No. 106 From Jct Hwy 55 to Creighton
No. 27 From Jct Hwy 2 to Jct Hwy 41	No. 120 From Jct Hwy Hwy 913- Jct Hwy 106
No. 28 From Jct Hwy 18 to Jct Hwy 13	No. 120 From Jct Hwy 913 to Jct Hwy 55
No. 29 From Wilkie to Battleford	No. 123 From Jct Hwy 55 to Cumberland House
No. 31 From Herschel Access to Grid 656	No. 135 From Jct Hwy 106 to Sandy Bay
No. 31 From Plenty to Jct Hwy 14	No. 155 From Green Lake to La Loche
No. 32 From Jct Hwy 1 to Leader	No. 165 From Jct Hwy 106 to North Jct Hwy 2
No. 33 From Stoughton to Sedley	No. 165 From South Jct Hwy 2 to 38 KM East of Jct Hwy 155
No. 33 From Sedley to Regina	No. 165 From 38 KM East of Jct Hwy 155 to Jct Hwy 155
No. 34 From U.S. Border to Jct Hwy 13	No. 167 From Sturgeon Weir River to Creighton
No. 35 From U.S. Border to Lipton	No. 201 From Jct Hwy 1 to Jct Hwy 247
No. 35 From Lipton to Jct Hwy 349	No. 202 From Jct Hwy 2 to Buffalo Pound Park
No. 35 From Jct Hwy 349 to Roads End	No. 209 From Jct Hwy 9 to 5 km West
No. 36 From U.S. Border to West Jct Hwy 18	No. 210 From Fort Qu'Appelle to Jct Hwy 10
No. 36 From West Jct Hwy 18 to Jct Hwy 13	No. 211 From Jct Hwy 11 to Blackstrap Prov. Park
No. 36 From Jct Hwy 13 to Jct Hwy 2	No. 212 From Jct Hwy 11 to Fort Carlton Park
No. 37 From U.S. Border to Cabri	No. 220 From Jct Hwy 20 to Rowan's Ravine Park
No. 38 From Jct Hwy 5 to Jct Hwy 23	No. 221 From Jct Hwy 21 to Cypress Hills Park Gate
No. 39 From U.S. Border to Jct Hwy 1	No. 224 From Jct Hwy 4 to Jct Hwy 26
No. 40 From Blaine Lake to Alberta Border	No. 225 From Jct Hwy 2 to Jct Hwy 312
No. 40 From Jct Hwy 3 to Blaine Lake	No. 229 From Jct Hwy 9 to Jct Hwy 47
No. 41 From Melfort to Jct Hwy 20	No. 240 From Jct Hwy 55 to Prince Albert Ntl Park South Boundary* (Winter secondary weights)
No. 41 From Jct Hwy 20 to Jct Hwy 5	No. 255 From Jct Hwy 55 to Tobin Lake
No. 42 From Jct Hwy 2 to Diefenbaker Lake	No. 263 From Jct Hwy 2 to Prince Albert Ntl Park Boundary
No. 42 From Diefenbaker Lake to Jct Hwy 342	No. 264 From Jct Hwy 2 to Prince Albert Ntl Park Boundary
No. 42 From Jct 342 to Dinsmore	No. 265 From Jct Hwy 120 to Jct Hwy 926
No. 43 From Jct Hwy 2 to Jct Hwy 4	No. 271 From Maple Creek to Fort Walsh
No. 44 From 31.7 kms East of Alsask to Jct Hwy 7 @ Alsask	No. 301 From Jct Hwy 1 to Buffalo Pound Park
No. 44 From Jct Hwy 19 to East Jct Hwy 42	No. 302 From Prince Albert to 30 km W. of Prince Albert
No. 44 From Dinsmore to South Jct Hwy 21	No. 303 From Jct Hwy 26 Turtleford to Jct Hwy 21
No. 45 From Lucky Lake to Delisle	No. 303 From Jct Hwy 21 to Jct Hwy 16
No. 46 From Balgonie to Regina	No. 304 From Meadow Lake to Loon Lake
No. 47 From U.S. Border to Jct Hwy 247	No. 305 From Jct Hwy 11 to Jct Hwy 16
No. 47 From Jct Hwy 247 to Preeceville	No. 306 From Jct Hwy 35 to Riceton
No. 49 From Manitoba Border to Jct Hwy 35	No. 306 From Riceton to Jct Hwy 6 * (8 000 kgs year-round)
No. 48 From Manitoba Border to Jct Hwy 9	No. 307 From Jct Hwy 7 to Jct Hwy 21
No. 48 From Jct Hwy 9 to White City	No. 309 From Rhein to Jct Hwy 9
No. 51 From Jct Hwy 4 to Alberta Border	

WINTER WEIGHT SEASON 2025-2026

- No. 310 From Balcarres to Ituna
- No. 310 From Ituna to Grid 743
- No. 310 From Grid 743 to Jct Hwy 16 * (8 000 kgs year-round)
- No. 310 From Foam Lake to Jct Hwy 5
- No. 312 From Jct Hwy 2 to Jct Hwy 12* (Gabriel Dumont Bridge – secondary weights year-round)
- No. 316 From Jct Hwy 16 to Jct Hwy 5
- No. 317 From Jct Hwy 7 to Jct Hwy 31
- No. 318 From Carnduff to Alida
- No. 320 From Jct Hwy 20 to Jct Hwy 2
- No. 321 From Liebenthal to Alberta Border
- No. 322 From Jct Hwy 20 to Jct Hwy 220
- No. 324 From Jct Hwy 378 to Mayfair
- No. 332 From Jct Hwy 32 to 7.1 km W. of Hwy 32* (Max GVW 8 000 kgs)
- No. 335 From Arborfield to Gronlid
- No. 340 From Jct Hwy 16 to Jct Hwy 40
- No. 342 From Jct Hwy 42 to Jct Hwy 4
- No. 342 From Grid 647 to Plato Access
- No. 343 From Jct Hwy 4 to Simmie
- No. 334 From Jct Hwy 13 to Jct Hwy 39* (Max GVW 8 000 kgs from Jct Hwy 13 to Avonlea)
- No. 339 From Jct Hwy 334 to Jct Hwy 39* (Max GVW 8 000 kgs except from 11.4km to 21.2km west of Jct Hwy 334)
- No. 349 From Jct Hwy 38 to Archerwill
- No. 349 From Jct Hwy 35 to Jct Hwy 6
- No. 350 From U.S. Border to Torquay
- No. 354 From Jct Hwy 11 to Dilke
- No. 355 From Meath Park to Sturgeon Lake Reserve
- No. 357 From Togo to Jct Hwy 8
- No. 358 From Wood Mountain to Limerick
- No. 361 From Manitoba Border to Jct Hwy 47
- No. 363 From Moose Jaw to Old Wives
- No. 363 From Old Wives to Jct Hwy 4
- No. 364 From Jct Hwy 10 to Balgonie
- No. 365 From Watrous to Jct Hwy 16
- No. 367 From Jct Hwy 42 to Jct Hwy 19
- No. 368 From Jct Hwy 5 to St. Brieux
- No. 368 From St. Brieux to Beatty
- No. 369 From Jct Hwy 10 to Togo
- No. 373 From Jct Hwy 42 to Jct Hwy 45
- No. 374 From Jct Hwy 21 to Jct Hwy 14
- No. 376 From Jct Hwy 14 to Jct Hwy 324
- No. 377 From Jct Hwy 28 to Jct Hwy 6
- No. 378 From Jct Hwy 4 to Jct Hwy 324
- No. 378 From Jct Hwy 324 to Jct Hwy 3
- No. 379 From McMahon to Jct Hwy 4
- No. 381 From Manitoba Border to Jct Hwy 80
- No. 397 From Jct Hwy 16 to Allan
- No. 903 From Jct Hwy 55 to 74 km North of Jct Hwy 965
- No. 904 From Jct Hwy 4 to 30.18 km north of Jct Hwy 4
- No. 905 From Jct Hwy 102 to Shasko Bay * (Max GVW 41 500 kgs)
- No. 908 From Jct Hwy 155 to Ile-a-la-Crosse
- No. 909 From Jct Hwy 155 to Turnor Lake
- No. 910 From Jct Hwy 165 to Besnard Lake
- No. 911 From Jct Hwy 106 to Deschambault Lake
- No. 912 From Jct Hwy 913 to Wapawekka Lake
- No. 913 From Jct Hwy 106 to Jct Hwy 912
- No. 913 From Jct Hwy 912 to Jct Hwy 120
- No. 914 From Jct Hwy 165 to Key Lake Minesite
- No. 916 From Jct Hwy 2 to Jct Hwy 924
- No. 915 From Jct Hwy 102 to Stanley Mission
- No. 918 From Jct Hwy 165 to Patuanak
- No. 919 From Jct Hwy 21 to Primrose Lake* (Cold River Bridge - No winter weights on Bridge)
- No. 920 From Jct Hwy 106 to Jct Hwy 932
- No. 922 From Bodmin to Jct Hwy 916
- No. 924 From Jct Hwy 55 to Dore Lake
- No. 925 From Jct Hwy 155 to Michel
- No. 926 From Jct Hwy 120 to Jct Hwy 969
- No. 927 From Jct Hwy 912 to East Trout Lake
- No. 931 From Jct Hwy 926 to Jct Hwy 963
- No. 942 From Jct Hwy 55 to Roads End
- No. 943 From Jct Hwy 942 to Meetoos
- No. 945 From Jct Hwy 24 to Jct Hwy 943
- No. 946 From Jct Hwy 943 to Leoville Grid
- No. 950 From Jct Hwy 224 to Jct Hwy 21
- No. 951 From Jct Hwy 904 to Jct Hwy 903
- No. 953 From Jct Hwy 2 to Jct Hwy 263
- No. 955 From La Loche to Cluff Lake Mine * (Douglas River Bridge - Max GVW 41 500 kgs)
- No. 956 From Jct Hwy 155 to Alberta Border
- No. 965 From Jct Hwy 155 to Jct Hwy 903
- No. 969 From Jct Hwy 2 to Jct Hwy 165
- No. 980 From Woody Lake Rd. N. of Arran to Armit
- No. 982 From Forest Boundary to Jct Hwy 9
- No. 983 From Jct Hwy 982 to Jct Hwy 9

WINTER WEIGHT SEASON 2025-2026

The Winter Weight Season **is in effect** for the following Rural Municipalities. (RM's that have opted out of Winter Weights will not appear in the Order):

No. 1	ARGYLE	No. 94	HAZELWOOD
No. 2	MOUNT PLEASANT	No. 95	GOLDEN WEST
No. 5	ESTEVAN	No. 96	FILMORE
No. 6	CAMBRIA	No. 97	WELLINGTON
No. 7	SOURIS VALLEY	No. 98	SCOTT
No. 8	LAKE ALMA	No. 99	CALEDONIA
No. 9	SURPRISE VALLEY	No. 100	ELMSTHORPE
No. 10	HAPPY VALLEY	No. 101	TERRELL
No. 11	HART BUTTE	No. 102	LAKE JOHNSTON
No. 12	POPLAR VALLEY	No. 103	SUTTON
No. 17	VAL MARIE	No. 104	GRAVELBOURG
No. 18	LONE TREE	No. 105	GLEN BAIN
No. 19	FRONTIER	No. 106	WHISKA CREEK
No. 31	STORTHOAKS	No. 107	LAC PELLETIER
No. 32	RECIPROCITY	No. 108	BONE CREEK
No. 34	BROWNING	No. 109	CARMICHAEL
No. 35	BENSON	No. 121	MOOSOMIN
No. 36	CYMRI	No. 122	MARTIN
No. 37	LOMOND	No. 123	SILVERWOOD
No. 38	LAURIER	No. 124	KINGSLEY
No. 39	THE GAP	No. 125	CHESTER
No. 40	BENGOUGH	No. 126	MONTMARTRE
No. 42	WILLOW BUNCH	No. 127	FRANCIS
No. 43	OLD POST	No. 128	LAJORD
No. 44	WAVERLEY	No. 129	BRATT'S LAKE
No. 45	MANKOTA	No. 130	REDBURN
No. 46	GLEN MCPHERSON	No. 131	BAILDON
No. 49	WHITE VALLEY	No. 132	HILLSBOROUGH
No. 51	RENO	No. 133	RODGERS
No. 61	ANTLER	No. 134	SHAMROCK
No. 63	MOOSE MOUNTAIN	No. 135	LAWTONIA
No. 64	BROCK	No. 136	COULEE
No. 65	TECUMSEH	No. 137	SWIFT CURRENT
No. 66	GRIFFIN	No. 138	WEBB
No. 67	WEYBURN	No. 139	GULL LAKE
No. 68	BROKENSHELL	No. 141	BIG STICK
No. 69	NORTON	No. 142	ENTERPRISE
No. 70	KEY WEST	No. 151	ROCANVILLE
No. 71	EXCEL	No. 152	SPY HILL
No. 72	LAKE OF THE RIVERS	No. 153	WILLOWDALE
No. 73	STONEHENGE	No. 154	ELCAPO
No. 74	WOOD RIVER	No. 155	WOLSELEY
No. 75	PINTO CREEK	No. 156	INDIAN HEAD
No. 76	AUVERGNE	No. 157	SOUTH QU'APPELLE
No. 77	WISE CREEK	No. 158	EDENWOLD
No. 78	GRASSY CREEK	No. 159	SHERWOOD
No. 79	ARLINGTON	No. 160	PENSE
No. 91	MARYFIELD	No. 161	MOOSE JAW
No. 92	WALPOLE	No. 162	CARON
No. 93	WAWKEN	No. 163	WHEATLANDS

WINTER WEIGHT SEASON 2025-2026

No. 164	CHAPLIN	No. 273	SLIDING HILLS
No. 165	MORSE	No. 274	GOOD LAKE
No. 167	SASKATCHEWAN LANDING	No. 275	INSINGER
No. 168	RIVERSIDE	No. 276	FOAM LAKE
No. 169	PITTEVILLE	No. 277	EMERALD
No. 171	FOX VALLEY	No. 279	MOUNT HOPE
No. 184	GRAYSON	No. 280	WREFORD
No. 185	MCLEOD	No. 281	WOOD CREEK
No. 186	ABERNETHY	No. 282	MCCRANEY
No. 187	NORTH QU'APPELLE	No. 283	ROSEDALE
No. 189	LUMSDEN	No. 284	RUDY
No. 190	DUFFERIN	No. 285	FERTILE VALLEY
No. 191	MARQUIS	No. 286	MILDEN
No. 193	EYEBROW	No. 287	ST. ANDREWS
No. 194	ENFIELD	No. 288	PLEASANT VALLEY
No. 211	CHURCHBRIDGE	No. 301	ST. PHILIPS
No. 213	SALTCOATS	No. 303	KEYS
No. 214	CANA	No. 304	BUCHANAN
No. 215	STANLEY	No. 305	INVERMAY
No. 216	TULLYMET	No. 307	ELFROS
No. 217	LIPTON	No. 308	BIG QUILL
No. 218	CUPAR	No. 309	PRAIRIE ROSE
No. 219	LOGLAKETON	No. 310	USBORNE
No. 220	MCKILLOP	No. 312	MORRIS
No. 221	SARINA	No. 313	LOST RIVER
No. 222	CRAIK	No. 314	DUNDURN
No. 223	HURON	No. 315	MONTROSE
No. 224	MAPLE BUSH	No. 316	HARRIS
No. 225	CANAAN	No. 317	MARRIOTT
No. 226	VICTORY	No. 318	MOUNTAIN VIEW
No. 228	LACADENA	No. 319	WINSLOW
No. 229	MIRY CREEK	No. 320	OAKDALE
No. 230	CLINTWORTH	No. 321	PRAIRIEDALE
No. 231	HAPYPLAND	No. 331	LIVINGSTON
No. 232	DEER FORKS	No. 333	CLAYTON
No. 241	CALDER	No. 334	PREECEVILLE
No. 243	WALLACE	No. 335	HAZEL DELL
No. 244	ORKNEY	No. 336	SASMAN
No. 245	GARRY	No. 337	LAKEVIEW
No. 246	ITUNA BON ACCORD	No. 338	LAKESIDE
No. 248	TOUCHWOOD	No. 339	LEROY
No. 250	LAST MOUNTAIN VALLEY	No. 340	WOLVERINE
No. 251	BIG ARM	No. 341	VISCOUNT
No. 252	ARM RIVER	No. 342	COLONSAY
No. 253	WILLNER	No. 343	BLUCHER
No. 254	LOREBURN	No. 344	CORMAN PARK
No. 255	COTEAU	No. 345	VANSCOY
No. 256	KING GEORGE	No. 346	PERDUE
No. 257	MONET	No. 347	BIGGAR
No. 259	SNIPE LAKE	No. 349	GRANDVIEW
No. 260	NEWCOMBE	No. 350	MARIPOSA
No. 261	CHESTERFIELD	No. 351	PROGRESS
No. 271	COTE	No. 352	HEART'S HILL

WINTER WEIGHT SEASON 2025-2026

No. 366 KELVINGTON
No. 368 SPALDING
No. 369 ST. PETER
No. 370 HUMBOLDT
No. 371 BAYNE
No. 372 GRANT
No. 373 ABERDEEN
No. 376 EAGLE CREEK
No. 377 GLENSIDE
No. 378 ROSEMOUNT
No. 379 REFORD
No. 380 TRAMPING LAKE
No. 381 GRASS LAKE
No. 382 EYE HILL
No. 394 HUDSON BAY
No. 395 PORCUPINE
No. 397 BARRIER VALLEY
No. 398 PLEASANTDALE
No. 399 LAKE LENORE
No. 400 THREE LAKES
No. 401 HOODOO
No. 402 FISH CREEK
No. 403 ROSTHERN
No. 404 LAIRD
No. 405 GREAT BEND
No. 406 MAYFIELD
No. 409 BUFFALO
No. 410 ROUND VALLEY
No. 411 SENLAC
No. 426 BJORKDALE
No. 427 TISDALE
No. 428 STAR CITY
No. 429 FLETT'S SPRINGS
No. 430 INVERGORDON
No. 431 ST. LOUIS
No. 434 BLAINE LAKE

No. 435 REDBERRY
No. 436 DOUGLAS
No. 437 NORTH BATTLEFORD
No. 438 BATTLE RIVER
No. 439 CUT KNIFE
No. 440 HILLSDALE
No. 457 CONNAUGHT
No. 459 KINISTINO
No. 460 BIRCH HILLS
No. 461 PRINCE ALBERT
No. 463 DUCK LAKE
No. 464 LEASK
No. 466 MEETING LAKE
No. 467 ROUND HILL
No. 468 MEOTA
No. 469 TURTLE RIVER
No. 470 PAYNTON
No. 471 ELDON
No. 486 MOOSE RANGE
No. 487 NIPAWIN
No. 488 TORCH RIVER
No. 490 GARDEN RIVER
No. 491 BUCKLAND
No. 493 SHELLBROOK
No. 494 CANWOOD
No. 496 SPIRITWOOD
No. 497 MEDSTEAD
No. 498 PARKDALE
No. 499 MERVIN
No. 501 FRENCHMAN BUTTE
No. 520 PADDOCKWOOD
No. 521 DISTRICT OF LAKELAND
No. 555 BIG RIVER
No. 561 LOON LAKE
No. 588 MEADOW LAKE
No. 622 BEAVER RIVER

WINTER WEIGHT SEASON 2025-2026

The following section is not part of the Order but is appended as **INFORMATION:**
Special Weight Restrictions on Selected Provincial Highways.

The following highways are subject to reduced weights, year-round, by regulation in accordance with the *Vehicle Weight and Dimension Regulations, 2010*

Hwy	From	To	Description
955	South abutment of the Douglas River Bridge	Northern most limit of Highway 955	Maximum GVW 41 500 kg

The following **BRIDGES** are restricted by Minister's ORDER to a maximum gross vehicle weight of Secondary Weights year-round. Winter Weights are not allowed.

Hwy	Bridge Location Description
2	Bridge over Little Red River from Southern Bridge Abutment to Northern Bridge Abutment. Bridge is located approximately 4.4 km south of Jct. with Hwy 355 and Hwy 2 near Spruce Home. Bridge is located on East Frontage Road.
3	Bridge over Red Deer River from Eastern Bridge Abutment to Western Bridge Abutment located approximately .5km west of Erwood, Sk.
4 Metinota Access	Bridge over Jackfish Narrows from Eastern Bridge Abutment to Western Bridge Abutment. Bridge is located in access road approximately 3.1km west of the Jct. with Hwy 4. Bridge is located on access road.
312 Gabriel Dumont Bridge	Truss Bridge over South Saskatchewan River from Eastern Bridge Abutment to Western Bridge Abutment.
919	Bridge over Martineau River from Southern Bridge Abutment to Northern Bridge Abutment. Bridge is located approximately 39.5km northwest of the Jct. with Hwy 21 and Hwy 950
935	Bridge over Morin River from the Southern Bridge Abutment to the Northern Bridge Abutment. Bridge is located approximately 7km north of the Jct. with Hwy 165 and Hwy 935.
955 Clearwater Truss Bridge	Truss Bridge over Clearwater River from Southern Bridge Abutment to Northern Bridge Abutment. Bridge is located approximately - 62 km north of Jct 155 and 955 to the Clearwater Bridge.
980 Elbow Lake Access	Bridge over Midnight Creek from Eastern Bridge Abutment to Western Bridge Abutment. Bridge is located approximately .3 km west of Elbow Lake, Sk.. The bridge is located on Spirit Lake/Elbow Lake access road.

The following **BRIDGES** are restricted by Minister's ORDER to a maximum gross vehicle weight of Primary Weights year-round. Winter Weights are not allowed.

Hwy	Bridge Location Description
2	Southbound Bridge over Hwy 1 from Southern Bridge Abutment to Northern Bridge Abutment. Bridge is located north of Moose Jaw Sk. at Jct with Hwy 1 and Hwy 2
6	Bridge over Barrier River Overflow from Southern Bridge Abutment to Northern Bridge Abutment. Bridge is located approximately 25.7 km south of Melfort, Sk.

The following highways are restricted by Minister's ORDER to a maximum gross vehicle weight of 8 000 kilograms year-round.

Highway	From	To
1 Caron Access	Jct Hwy 1	Hamlet of Caron
1 Grand Coulee Access	Jct Hwy 1	Village of Grand Coulee
2 Eastside Service Road near Prince Albert	Jct Boundary Street East Service Rd north	Jct Township Road (approx. 2.4 kms)

WINTER WEIGHT SEASON 2025-2026

4 Blumenhof Access	Jct Hwy 4 east	Blumenhof
6 Leroy Access	Jct Hwy 6	Town of Leroy
8 Tantallon Access	Jct. Hwy 8	Village of Tantallon
12 Hepburn Access	Jct. Hwy 12	Village of Hepburn
12 Waldheim Access	Jct. Hwy 12	100 meters west of the west boundary of NW 15-42-5 W3M in the town of Waldheim.
13 Bellegarde Access	Jct. Hwy 13	Bellegarde
13 Forget Access	Jct. Hwy 13	The Village of Forget
15	Jct. Hwy 16	Jct. Hwy 9
16 Bradwell Access	Jct. Hwy 16	Village of Bradwell
21 Mendham Access	Jct Hwy 21 Mendham Access	Intersection with the North-South portion of the Municipal Alternate Truck Route
30	Eston Regional Park located at the southwest corner of Section 20, Township 23, Range 20, West 3rd Meridian	The jct. of municipal Hwy located at the north-east corner of Section 34, Township 28, Range 20, West 3rd Meridian
31	Jct. Hwy 4	Herschel Access Road
31	Grid 656 at NW corner of Section 34, Township 31, Range 17, west of the 3rd Meridian	The intersection of the Plenty grid at the NW corner, Section 21, Township 32, Range 19, west of the 3rd Meridian
39 Bienfait Access	Jct Hwy 39	Jct Hwy 18 (In the Town of Bienfait)
40 David Laird Campsite Road	Jct No. Hwy 40	Jct Hwy No. 16
41 Alvena Access	Jct Hwy 41	2nd Avenue in Village of Alvena
42	Jct Hwy 42 - Keeler Service Road/Railway Ave. S.	Keeler Service Road/Railway Ave. to RM Road 643
42 (1)	Jct Hwy 373	Jct Hwy 45 in the Town of Lucky Lake
42	From its Jct with Hwy 44 (km 43.68)	its Jct with Hwy 15 (km 59.92), for a total of 16.2 km.
44(1)	Jct Hwy 19	Junction with the Danielson Provincial Park Access located in the southeast of Section 32, Township 26, Range 6, West of the 3rd Meridian.
4(1)	Jct Hwy 21	Westerly to the Jct with the municipal road located in the NE 1/4 of Section 24, Township 26, Range 27, west of the 3rd Meridian
44(1)	Jct with the municipal road located at the SW 1/4 of Section 26, Township 26, Range 27, west of the 3rd Meridian	Jct with the municipal road located east of Section 31, Township 26, Range 27, west of the 3rd Meridian
306	Riceton	Jct Hwy 6

WINTER WEIGHT SEASON 2025-2026

308	Jct Hwy 8	Jct with Primary Grid 600
310	Jct of Grid 743	Jct of Hwy No. 16
312 Laird Access	Jct Hwy 312	The Village of Laird
332	7.1 km west of Jct Hwy 32	The Village of Hazlet except for that portion between the east and west Jct of Hwy 37
334	Jct Hwy 13	3.3 km south of Jct Hwy 339
339	Village of Avonlea	Jct. of Hwy 39 except for that portion from 11.4 km west of Avonlea to 21.2 km west of Avonlea
342	Jct Hwy 4	Jct of Primary Grid 647 north of Lacadena
371	Jct Hwy 21	Alberta Border

The following highways are restricted by Minister's ORDER to a maximum gross vehicle weight of 8 000 kilograms from March 1st to November 30th each year.

Hwy	From	To
302	Cecil Ferry Road at the SE corner of Section 22, Township 48, Range 24, west of the 2nd Meridian	Jct of the municipal road located at SE corner of Section 5, Township 49, Range 22, west of Second Meridian (located by the Weldon Ferry)

The following access road is restricted by Minister's ORDER to a maximum gross vehicle weight of 8 000 kilograms from March 1st to November 30th each year.

Hwy	From	To
2 Paddockwood Access	Jct Hwy 2	Grid Road intersection NE Section 23, Township 52, Range 25, W2nd Meridian

The following highway is restricted by Minister's ORDER to a maximum gross vehicle weight of 8 000 kilograms from March 15th to November 15th each year and *when the ambient temperature is above -6°C*.

Hwy	From	To
8	0.5 km North of Junction Highway 49 at Norquay	The community of Swan Plain at the south boundary of SE 27-36-1-W2M

The following Access Road is restricted by Minister's ORDER to a maximum gross vehicle weight of 8 000 kilograms from February 24 to November 15th each year and *when the ambient temperature is above -6°C*.

Hwy	From	To
35 Aylsham Access	Hwy 35 (NW corner of section 32, township 48, range 14, west of second Meridian)	Aylsham (NE corner of section 34, township 48, range 13, west of second Meridian)

WINTER WEIGHT SEASON 2025-2026

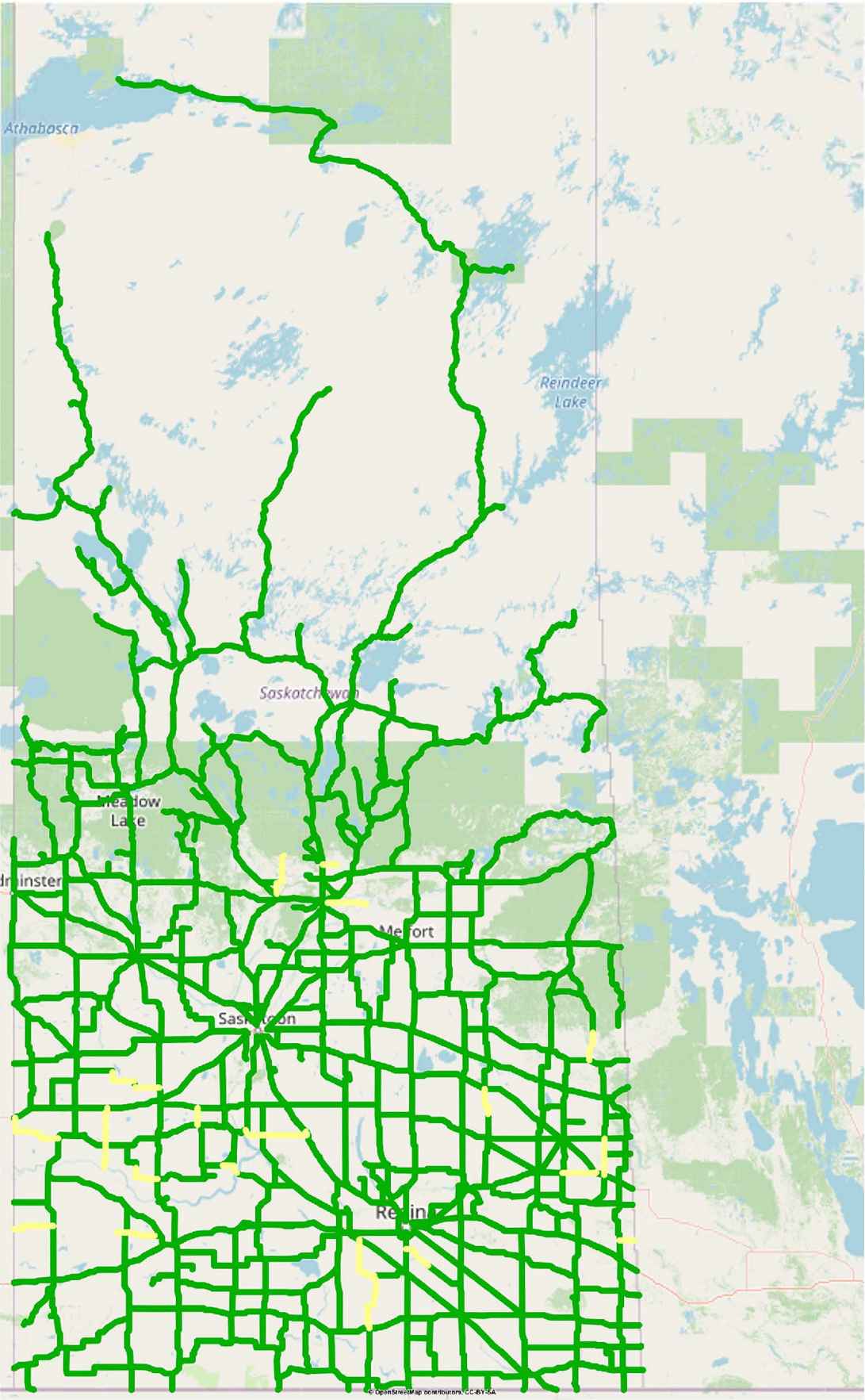
The following highway is restricted by Minister's ORDER to a maximum gross vehicle weight of 75% of primary highway weights, except during winter weight season, when winter secondary weights shall apply.

Hwy	From	To
240	Junction Highway 55	No. 240 - From Jct Hwy 55 to Prince Albert National Park SPECIAL RESTRICTIONS – 4.5 kg per mm (252 lbs/in) width of tire (manufacturer's stamped dimension) on any wheel to a maximum GVW of 22,686 kg (50,000 lbs), including the steering axle.

For detailed information on Rural Roads, call the local rural municipality or for Provincial Highway information email the Highway Hotline hotline@gov.sk.ca. The rural municipality administers and maintains the alternate haul routes. They are also responsible for issuing any overweight permits associated with the alternate haul routes.

Saskatchewan Ministry of Highways and Infrastructure provides seasonal highway restriction information on the Internet at: <http://www.saskatchewan.ca/truckingweights> under Special Weights.

Truckers can also contact the Saskatchewan Ministry of Highways, Trucking inquiry line at Toll free in Saskatchewan: 1-866-933-5290 Out of Saskatchewan: 306-933-5290 email: mhitrucking@gov.sk.ca



- Winter Weight Season**
- █ In Effect
 - █ Not In Effect
 - █ Future Restrictions
- Spring Weight Season**
- █ No Restrictions
 - █ Restricted
 - █ Future Restrictions
- Special Weight Restrictions**
- █ Special Weight Restrictions

Notes