

WINTER WEIGHT SEASON 2025-2026

Eighth Order – 2025

Minister's Order Pursuant to section 35 of The Highways and Transportation Act, 1997, The Vehicle Weight and Dimension Regulations, 2010, permit heavier weights on public highways during the Winter Weight Season.

The Winter Weight Season is defined in s. 2 (ggg) of the regulations as commencing on November 16 of each year and ending on March 14 of the following year.

Section 2(2) of the regulations states that if the Minister considers it necessary to protect a public highway, the Minister may issue an order under section 35 of the Act restricting the Winter Weight Season for the highways mentioned in the order for the period specified in the order.

Pursuant to section 35 of "The Highways and Transportation Act, 1997" it is hereby ordered that, **effective 12:01 am Friday December 12, 2025.**

The Winter Weight Season **will be in effect** for the following Provincial Highways at **12:01 am Friday December 12, 2025:**

MINISTER'S ORDER No: 80-2024-WI2-PILOT

ORDER for Increasing Weight Designation on Provincial Highway No. 80.

Pursuant to section 35.1 of *The Highways and Transportation Act, 1997*, the Minister hereby Orders: effective each year during the officially designated winter weight season for the Yorkton District effective until March 15, 2027; this Order authorizes any person, vehicle or class of vehicles to operate at the weights set for primary highways by *The Vehicle Weight and Dimension Regulations, 2010*, on Provincial Highway No. 80 from its junction with Provincial Highway No. 16 to its junction with Provincial Highway No. 10.

Outside of the designated winter weight season Provincial Highway No. 80 will revert back to a 8,000 kilogram restriction by Minister's Order signed July 6, 2001. **The 15 Kilometre Rule does not apply under the Order.**

MINISTER'S ORDER No: 49-2024-WI3-PILOT

ORDER for Increasing Weight Designation on Provincial Highway No. 49.

Pursuant to section 35.1 of *The Highways and Transportation Act, 1997*, the Minister hereby Orders: effective beginning December 15, 2024 and ending March 15, 2025,

- beginning June 15 2025 and ending March 15, 2026,
- beginning June 15 2026 and ending March 15, 2027,
- beginning June 15 2027 and ending March 15, 2028,
- and beginning June 15 and ending March 15, 2029.

this Order authorizes any person, vehicle or class of vehicles to operate at the weights set for primary highways *The Vehicle Weight and Dimension Regulations, 2010*, on Provincial Highway No. 49 from its junction with Provincial Highway No. 8, near Pelly, eastward to the Saskatchewan/Manitoba provincial border. **The 15 Kilometre Rule does not apply under the Order.**

No. 4 From Saskatchewan Landing to Glaslyn
No. 5 From Manitoba Border to Quill Lake
No. 5 From Quill Lake to Saskatoon
No. 6 From Raymore to Naicam
No. 7 From Saskatoon to Alberta Border
No. 7 From Saskatoon to Delisle

No. 7 From Delisle to Alberta Border
No. 8 From South Jct 22 to Forest Boundary*
(Norquay to Swan Plain – 8,000 kgs if above -6 degrees)
No. 9 From Jct 1 to Jct Hwy 983
No. 10 From Manitoba Border to Balcarres

WINTER WEIGHT SEASON 2025-2026

No. 11 From Davidson to MacDowall
No. 12 From Saskatoon to Blaine Lake
No. 14 From Saskatoon to Asquith
No. 14 From Asquith to Alberta Border
No. 15 From Jct Hwy 9 to Jct Hwy 6
No. 15 From Jct Hwy 20 to Jct Hwy 4
No. 15 From Jct Hwy 42 to Jct Hwy 4
No. 16 From Manitoba Border to Dafoe
No. 16 From Jct Hwy 6 to Langham
No. 16 From Langham to Lloydminster
No. 17 From Jct Hwy 14 to Onion Lake
No. 19 From Jct Hwy 44 to Jct Hwy 15
No. 20 From South Jct Hwy 15 to Jct Hwy 320
No. 21 From Glidden to South Jct Hwy 303
No. 22 From Manitoba Border to Jct Hwy 10
No. 23 From Somme to Jct Hwy 38
No. 26 From Jct Hwy 4 to Vawn
No. 27 From Jct Hwy 2 to Jct Hwy 41
No. 29 From Wilkie to Battleford
No. 31 From Herschel Access to Grid 656
No. 31 From Plenty to Jct Hwy 14
No. 35 From Lipton to Jct Hwy 349
No. 38 From Jct Hwy 5 to Jct Hwy 23
No. 40 From Blaine Lake to Alberta Border
No. 41 From Jct Hwy 20 to Jct Hwy 5
No. 42 From Diefenbaker Lake to Jct Hwy 342
No. 42 From Dinsmore to Jct Hwy 15
No. 42 From Jct 342 to Dinsmore
No. 44 From Jct Hwy 19 to East Jct Hwy 42
No. 44 From Dinsmore to South Jct Hwy 21
No. 45 From Lucky Lake to Delisle
No. 47 From Jct Hwy 247 to Preeceville
No. 49 From Manitoba Border to Jct Hwy 35
No. 51 From Jct Hwy 4 to Alberta Border
No. 52 From Yorkton to Jct Hwy 15
No. 57 From Manitoba Border to Jct Hwy 5

No. 60 From Pike Lake to Jct Hwy 7
No. 80 From Esterhazy to Churchbridge
No. 201 From Jct Hwy 1 to Jct Hwy 247
No. 211 From Jct Hwy 11 to Blackstrap Prov. Park
No. 212 From Jct Hwy 11 to Fort Carlton Park
No. 225 From Jct Hwy 2 to Jct Hwy 312
No. 229 From Jct Hwy 9 to Jct Hwy 47
No. 303 From Jct Hwy 21 to Jct Hwy 16
No. 305 From Jct Hwy 11 to Jct Hwy 16
No. 307 From Jct Hwy 7 to Jct Hwy 21
No. 309 From Rhein to Jct Hwy 9
No. 310 From Ituna to Grid 743
No. 310 From Grid 743 to Jct Hwy 16 * (8 000 kgs year round)
No. 310 From Foam Lake to Jct Hwy 5
No. 312 From Jct Hwy 2 to Jct Hwy 12* (Gabriel Dumont Bridge – secondary weights year round)
No. 316 From Jct Hwy 16 to Jct Hwy 5
No. 317 From Jct Hwy 7 to Jct Hwy 31
No. 320 From Jct Hwy 20 to Jct Hwy 2
No. 324 From Jct Hwy 378 to Mayfair
No. 340 From Jct Hwy 16 to Jct Hwy 40
No. 342 From Jct Hwy 42 to Jct Hwy 4
No. 342 From Grid 647 to Plato Access
No. 349 From Jct Hwy 38 to Archerwill
No. 349 From Jct Hwy 35 to Jct Hwy 6
No. 357 From Togo to Jct Hwy 8
No. 365 From Watrous to Jct Hwy 16
No. 368 From Jct Hwy 5 to St. Brieux
No. 369 From Jct Hwy 10 to Togo
No. 373 From Jct Hwy 42 to Jct Hwy 45
No. 374 From Jct Hwy 21 to Jct Hwy 14
No. 376 From Jct Hwy 14 to Jct Hwy 324
No. 378 From Jct Hwy 4 to Jct Hwy 324
No. 381 From Manitoba Border to Jct Hwy 80
No. 397 From Jct Hwy 16 to Allan

The Winter Weight Season will be in effect for the following Rural Municipalities at 12:01 am Friday December 12, 2025. (RM's that have opted out of Winter Weights will not appear in the Order):

No. 153	WILLOWDALE	No. 213	SALTCOATS
No. 154	ELCAPO	No. 214	CANA
No. 184	GRAYSON	No. 215	STANLEY
No. 185	MCLEOD	No. 217	LIPTON
No. 186	ABERNETHY	No. 225	CANAAN
No. 211	CHURCHBRIDGE	No. 226	VICTORY

WINTER WEIGHT SEASON 2025-2026

No. 228	LACADENA	No. 321	PRAIRIEDALE
No. 241	CALDER	No. 333	CLAYTON
No. 243	WALLACE	No. 334	PREECEVILLE
No. 244	ORKNEY	No. 335	HAZEL DELL
No. 245	GARRY	No. 336	SASMAN
No. 246	ITUNA BON ACCORD	No. 337	LAKEVIEW
No. 248	TOUCHWOOD	No. 338	LAKESIDE
No. 251	BIG ARM	No. 339	LEROY
No. 254	LOREBURN	No. 340	WOLVERINE
No. 255	COTEAU	No. 341	VISCOUNT
No. 256	KING GEORGE	No. 342	COLONSAY
No. 257	MONET	No. 343	BLUCHER
No. 259	SNIPES LAKE	No. 344	CORMAN PARK
No. 260	NEWCOMBE	No. 345	VANSCOY
No. 271	COTE	No. 346	PERDUE
No. 273	SLIDING HILLS	No. 347	BIGGAR
No. 274	GOOD LAKE	No. 349	GRANDVIEW
No. 275	INSINGER	No. 350	MARIPOSA
No. 276	FOAM LAKE	No. 351	PROGRESS
No. 277	EMERALD	No. 352	HEART'S HILL
No. 280	WREFORD	No. 366	KELVINGTON
No. 281	WOOD CREEK	No. 368	SPALDING
No. 282	MCCRANEY	No. 369	ST. PETER
No. 283	ROSEDALE	No. 370	HUMBOLDT
No. 284	RUDY	No. 371	BAYNE
No. 285	FERTILE VALLEY	No. 372	GRANT
No. 286	MILDEN	No. 373	ABERDEEN
No. 287	ST. ANDREWS	No. 376	EAGLE CREEK
No. 288	PLEASANT VALLEY	No. 377	GLENSIDE
No. 301	ST. PHILIPS	No. 378	ROSEMOUNT
No. 303	KEYS	No. 379	REFORD
No. 304	BUCHANAN	No. 380	TRAMPING LAKE
No. 305	INVERMAY	No. 381	GRASS LAKE
No. 307	ELFROS	No. 382	EYE HILL
No. 308	BIG QUILL	No. 395	PORCUPINE
No. 309	PRAIRIE ROSE	No. 399	LAKE LENORE
No. 310	USBORNE	No. 400	THREE LAKES
No. 312	MORRIS	No. 401	HOODOO
No. 313	LOST RIVER	No. 402	FISH CREEK
No. 314	DUNDURN	No. 403	ROSTHERN
No. 315	MONTROSE	No. 404	LAIRD
No. 316	HARRIS	No. 405	GREAT BEND
No. 317	MARRIOTT	No. 406	MAYFIELD
No. 318	MOUNTAIN VIEW	No. 409	BUFFALO
No. 319	WINSLOW	No. 410	ROUND VALLEY
No. 320	OAKDALE	No. 411	SENLAC

WINTER WEIGHT SEASON 2025-2026

No. 431 ST. LOUIS
No. 434 BLAINE LAKE
No. 435 REDBERRY
No. 436 DOUGLAS
No. 437 NORTH BATTLEFORD
No. 438 BATTLE RIVER

No. 439 CUT KNIFE
No. 440 HILLSDALE
No. 468 MEOTA
No. 470 PAYNTON
No. 471 ELDON

Signed on behalf of the Minister on this 9th day of December 2025.



Lana Eering
Government of Saskatchewan
Ministry of Highways
Manager, Highway Hotline/Emergency Planning Officer

WINTER WEIGHT SEASON 2025-2026

The Winter Weight Season **is in effect** for the following Provincial Highways:

- | | |
|--|---|
| No. 2 From Weyakwin to La Ronge | No. 335 From Arborfield to Gronlid |
| No. 2 From St. Louis to Weyakwin | No. 355 From Meath Park to Sturgeon Lake Reserve |
| No. 3 From Manitoba Border to Kinistino | No. 368 From St. Brieux to Beatty |
| No. 3 From Kinistino to Jct Hwy 4 | No. 378 From Jct Hwy 324 to Jct Hwy 3 |
| No. 3 Jct Hwy 4 to Jct Hwy 26 | No. 903 From Jct Hwy 55 to 74 km North of Jct Hwy 965 |
| No. 3 Jct Hwy 26 to Jct Hwy 17 | No. 904 From Jct Hwy 4 to 30.18 km north of Jct Hwy 4 |
| No. 4 From Glaslyn to Jct Hwy 224 | No. 905 From Jct Hwy 102 to Shasko Bay * (Max GVW 41 500 kgs) |
| No. 6 From Naicam to Jct Hwy 55 | No. 908 From Jct Hwy 155 to Ile-a-la-Crosse |
| No. 9 From Jct Hwy 983 to Manitoba Border | No. 909 From Jct Hwy 155 to Turnor Lake |
| No. 11 From MacDowall to Prince Albert | No. 910 From Jct Hwy 165 to Besnard Lake |
| No. 12 From Blaine Lake to Shell Lake | No. 911 From Jct Hwy 106 to Deschambault Lake |
| No. 20 From Jct Hwy 320 to Jct Hwy 3 | No. 912 From Jct Hwy 913 to Wapawekka Lake |
| No. 21 From South Jct Hwy 303 to Meadow Lake Park | No. 913 From Jct Hwy 106 to Jct Hwy 912 |
| No. 23 From Jct Hwy 9 to Somme | No. 913 From Jct Hwy 912 to Jct Hwy 120 |
| No. 23 From Jct Hwy 38 to Jct Hwy 55 | No. 914 From Jct Hwy 165 to Key Lake Minesite |
| No. 25 From Jct Hwy 3 to Jct Hwy 2 | No. 916 From Jct Hwy 2 to Jct Hwy 924 |
| No. 26 From Vawn to Goodsoil | No. 915 From Jct Hwy 102 to Stanley Mission |
| No. 35 From Jct Hwy 349 to Roads End | No. 918 From Jct Hwy 165 to Patuanak |
| No. 40 From Jct Hwy 3 to Blaine Lake | No. 919 From Jct Hwy 21 to Primrose Lake* (Cold River Bridge - No winter weights on Bridge) |
| No. 41 From Melfort to Jct Hwy 20 | No. 920 From Jct Hwy 106 to Jct Hwy 932 |
| No. 55 From Jct Hwy 9 to Smeaton | No. 922 From Bodmin to Jct Hwy 916 |
| No. 55 From Smeaton to Green Lake | No. 924 From Jct Hwy 55 to Dore Lake |
| No. 55 From Green Lake to Alberta Border | No. 925 From Jct Hwy 155 to Michel |
| No. 102 From La Ronge to Southend | No. 926 From Jct Hwy 120 to Jct Hwy 969 |
| No. 106 From Jct Hwy 55 to Creighton | No. 927 From Jct Hwy 912 to East Trout Lake |
| No. 120 From Jct Hwy Hwy 913- Jct Hwy 106 | No. 931 From Jct Hwy 926 to Jct Hwy 963 |
| No. 120 From Jct Hwy 913 to Jct Hwy 55 | No. 942 From Jct Hwy 55 to Roads End |
| No. 123 From Jct Hwy 55 to Cumberland House | No. 943 From Jct Hwy 942 to Meetoos |
| No. 135 From Jct Hwy 106 to Sandy Bay | No. 945 From Jct Hwy 24 to Jct Hwy 943 |
| No. 155 From Green Lake to La Loche | No. 946 From Jct Hwy 943 to Leoville Grid |
| No. 165 From Jct Hwy 106 to North Jct Hwy 2 | No. 950 From Jct Hwy 224 to Jct Hwy 21 |
| No. 165 From South Jct Hwy 2 to 38 KM East of Jct Hwy 155 | No. 951 From Jct Hwy 904 to Jct Hwy 903 |
| No. 165 From 38 KM East of Jct Hwy 155 to Jct Hwy 155 | No. 953 From Jct Hwy 2 to Jct Hwy 263 |
| No. 167 From Sturgeon Weir River to Creighton | No. 955 From La Loche to Cluff Lake Mine * (Douglas River Bridge - Max GVW 41 500 kgs) |
| No. 224 From Jct Hwy 4 to Jct Hwy 26 | No. 956 From Jct Hwy 155 to Alberta Border |
| No. 240 From Jct Hwy 55 to Prince Albert Ntl Park South Boundary* (Winter secondary weights) | No. 965 From Jct Hwy 155 to Jct Hwy 903 |
| No. 255 From Jct Hwy 55 to Tobin Lake | No. 969 From Jct Hwy 2 to Jct Hwy 165 |
| No. 263 From Jct Hwy 2 to Prince Albert Ntl Park Boundary | No. 980 From Woody Lake Rd. N. of Arran to Armit |
| No. 264 From Jct Hwy 2 to Prince Albert Ntl Park Boundary | No. 982 From Forest Boundary to Jct Hwy 9 |
| No. 265 From Jct Hwy 120 to Jct Hwy 926 | No. 983 From Jct Hwy 982 to Jct Hwy 9 |
| No. 302 From Prince Albert to 30 km W. of Prince Albert | |
| No. 303 From Jct Hwy 26 Turtleford to Jct Hwy 21 | |
| No. 304 From Meadow Lake to Loon Lake | |

WINTER WEIGHT SEASON 2025-2026

The Winter Weight Season **is in effect** for the following Rural Municipalities. (RM's that have opted out of Winter Weights will not appear in the Order):

No. 331 LIVINGSTON	No. 461 PRINCE ALBERT	No. 496 SPIRITWOOD
No. 394 HUDSON BAY	No. 463 DUCK LAKE	No. 497 MEDSTEAD
No. 397 BARRIER VALLEY	No. 464 LEASK	No. 498 PARKDALE
No. 398 PLEASANTDALE	No. 466 MEETING LAKE	No. 499 MERVIN
No. 426 BJORKDALE	No. 467 ROUND HILL	No. 501 FRENCHMAN BUTTE
No. 427 TISDALE	No. 469 TURTLE RIVER	No. 520 PADDOCKWOOD
No. 428 STAR CITY	No. 486 MOOSE RANGE	No. 521 DISTRICT OF LAKELAND
No. 429 FLETT'S SPRINGS	No. 487 NIPAWIN	No. 555 BIG RIVER
No. 430 INVERGORDON	No. 488 TORCH RIVER	No. 561 LOON LAKE
No. 456 ARBORFIELD	No. 490 GARDEN RIVER	No. 588 MEADOW LAKE
No. 457 CONNAUGHT	No. 491 BUCKLAND	No. 622 BEAVER RIVER
No. 459 KINISTINO	No. 493 SHELLBROOK	
No. 460 BIRCH HILLS	No. 494 CANWOOD	

WINTER WEIGHT SEASON 2025-2026

The following section is not part of the Order but is appended as **INFORMATION:**

Special Weight Restrictions on Selected Provincial Highways.

The following highways are subject to reduced weights, year-round, by regulation in accordance with the *Vehicle Weight and Dimension Regulations, 2010*

Hwy	From	To	Description
955	South abutment of the Douglas River Bridge	Northern most limit of Highway 955	Maximum GVW 41 500 kg

The following **BRIDGES** are restricted by Minister's **ORDER** to a maximum gross vehicle weight of **Secondary Weights** year-round. **Winter Weights** are not allowed.

Hwy	Bridge Location Description
2	Bridge over Little Red River from Southern Bridge Abutment to Northern Bridge Abutment. Bridge is located approximately 4.4 km south of Jct. with Hwy 355 and Hwy 2 near Spruce Home. Bridge is located on East Frontage Road.
3	Bridge over Red Deer River from Eastern Bridge Abutment to Western Bridge Abutment located approximately .5km west of Erwood, Sk.
4 Metinota Access	Bridge over Jackfish Narrows from Eastern Bridge Abutment to Western Bridge Abutment. Bridge is located in access road approximately 3.1km west of the Jct. with Hwy 4. Bridge is located on access road.
312 Gabriel Dumont Bridge	Truss Bridge over South Saskatchewan River from Eastern Bridge Abutment to Western Bridge Abutment.
919	Bridge over Martineau River from Southern Bridge Abutment to Northern Bridge Abutment. Bridge is located approximately 39.5km northwest of the Jct. with Hwy 21 and Hwy 950
935	Bridge over Morin River from the Southern Bridge Abutment to the Northern Bridge Abutment. Bridge is located approximately 7km north of the Jct. with Hwy 165 and Hwy 935.
955 Clearwater Truss Bridge	Truss Bridge over Clearwater River from Southern Bridge Abutment to Northern Bridge Abutment. Bridge is located approximately - 62 km north of Jct 155 and 955 to the Clearwater Bridge.
980 Elbow Lake Access	Bridge over Midnight Creek from Eastern Bridge Abutment to Western Bridge Abutment. Bridge is located approximately .3 km west of Elbow Lake, Sk.. The bridge is located on Spirit Lake/Elbow Lake access road.

The following **BRIDGES** are restricted by Minister's **ORDER** to a maximum gross vehicle weight of **Primary Weights** year-round. **Winter Weights** are not allowed.

Hwy	Bridge Location Description
2	Southbound Bridge over Hwy 1 from Southern Bridge Abutment to Northern Bridge Abutment. Bridge is located north of Moose Jaw Sk. at Jct. with Hwy 1 and Hwy 2
6	Bridge over Barrier River Overflow from Southern Bridge Abutment to Northern Bridge Abutment. Bridge is located approximately 25.7 km south of Melfort, Sk.

The following highways are restricted by Minister's **ORDER** to a maximum gross vehicle weight of **8 000 kilograms** year-round.

Highway	From	To
1 Caron Access	Jct Hwy 1	Hamlet of Caron
1 Grand Coulee Access	Jct Hwy 1	Village of Grand Coulee
2 Eastside Service Road near Prince Albert	Jct Boundary Street East Service Rd north	Jct Township Road (approx. 2.4 kms)

WINTER WEIGHT SEASON 2025-2026

4 Blumenhof Access	Jct Hwy 4 east	Blumenhof
6 Leroy Access	Jct Hwy 6	Town of Leroy
8 Tantallon Access	Jct. Hwy 8	Village of Tantallon
12 Hepburn Access	Jct. Hwy 12	Village of Hepburn
12 Waldheim Access	Jct. Hwy 12	100 meters west of the west boundary of NW 15-42-5 W3M in the town of Waldheim.
13 Bellegarde Access	Jct. Hwy 13	Bellegarde
13 Forget Access	Jct. Hwy 13	The Village of Forget
15	Jct. Hwy 16	Jct. Hwy 9
16 Bradwell Access	Jct. Hwy 16	Village of Bradwell
21 Mendham Access	Jct Hwy 21 Mendham Access	Intersection with the North-South portion of the Municipal Alternate Truck Route
30	Eston Regional Park located at the southwest corner of Section 20, Township 23, Range 20, West 3rd Meridian	The jct. of municipal Hwy located at the north-east corner of Section 34, Township 28, Range 20, West 3rd Meridian
31	Jct. Hwy 4	Herschel Access Road
31	Grid 656 at NW corner of Section 34, Township 31, Range 17, west of the 3rd Meridian	The intersection of the Plenty grid at the NW corner, Section 21, Township 32, Range 19, west of the 3rd Meridian
39 Bienfait Access	Jct Hwy 39	Jct Hwy 18 (In the Town of Bienfait)
40 David Laird Campsite Road	Jct No. Hwy 40	Jct Hwy No. 16
41 Alvena Access	Jct Hwy 41	2nd Avenue in Village of Alvena
42	Jct Hwy 42 - Keeler Service Road/Railway Ave. S.	Keeler Service Road/Railway Ave. to RM Road 643
42 (1)	Jct Hwy 373	Jct Hwy 45 in the Town of Lucky Lake
42	From its Jct with Hwy 44 (km 43.68)	its Jct with Hwy 15 (km 59.92), for a total of 16.2 km.
44(1)	<i>Jct Hwy 19</i>	<i>Junction with the Danielson Provincial Park Access located in the southeast of Section 32, Township 26, Range 6, West of the 3rd Meridian.</i>
4(1)	<i>Jct Hwy 21</i>	<i>Westerly to the Jct with the municipal road located in the NE 1/4 of Section 24, Township 26, Range 27, west of the 3rd Meridian</i>
44(1)	<i>Jct with the municipal road located at the SW 1/4 of Section 26, Township 26, Range 27, west of the 3rd Meridian</i>	<i>Jct with the municipal road located east of Section 31, Township 26, Range 27, west of the 3rd Meridian</i>
306	Riceton	Jct Hwy 6

WINTER WEIGHT SEASON 2025-2026

308	Jct Hwy 8	Jct with Primary Grid 600
310	Jct of Grid 743	Jct of Hwy No. 16
312 Laird Access	Jct Hwy 312	The Village of Laird
332	7.1 km west of Jct Hwy 32	The Village of Hazlet except for that portion between the east and west Jct of Hwy 37
334	Jct Hwy 13	3.3 km south of Jct Hwy 339
339	Village of Avonlea	Jct. of Hwy 39 except for that portion from 11.4 km west of Avonlea to 21.2 km west of Avonlea
342	Jct Hwy 4	Jct of Primary Grid 647 north of Lacadena
371	Jct Hwy 21	Alberta Border

The following highways are restricted by Minister's ORDER to a maximum gross vehicle weight of 8 000 kilograms from March 1st to November 30th each year.

Hwy	From	To
302	Cecil Ferry Road at the SE corner of Section 22, Township 48, Range 24, west of the 2nd Meridian	Jct of the municipal road located at SE corner of Section 5, Township 49, Range 22, west of Second Meridian (located by the Weldon Ferry)

The following access road is restricted by Minister's ORDER to a maximum gross vehicle weight of 8 000 kilograms from March 1st to November 30th each year.

Hwy	From	To
2 Paddockwood Access	Jct Hwy 2	Grid Road intersection NE Section 23, Township 52, Range 25, W2nd Meridian

The following highway is restricted by Minister's ORDER to a maximum gross vehicle weight of 8 000 kilograms from March 15th to November 15th each year and *when the ambient temperature is above -6°C*.

Hwy	From	To
8	0.5 km North of Junction Highway 49 at Norquay	The community of Swan Plain at the south boundary of SE 27-36-1-W2M

The following Access Road is restricted by Minister's ORDER to a maximum gross vehicle weight of 8 000 kilograms from February 24 to November 15th each year and *when the ambient temperature is above -6°C*.

Hwy	From	To
35 Aylsham Access	Hwy 35 (NW corner of section 32, township 48, range 14, west of second Meridian)	Aylsham (NE corner of section 34, township 48, range 13, west of second Meridian)

WINTER WEIGHT SEASON 2025-2026

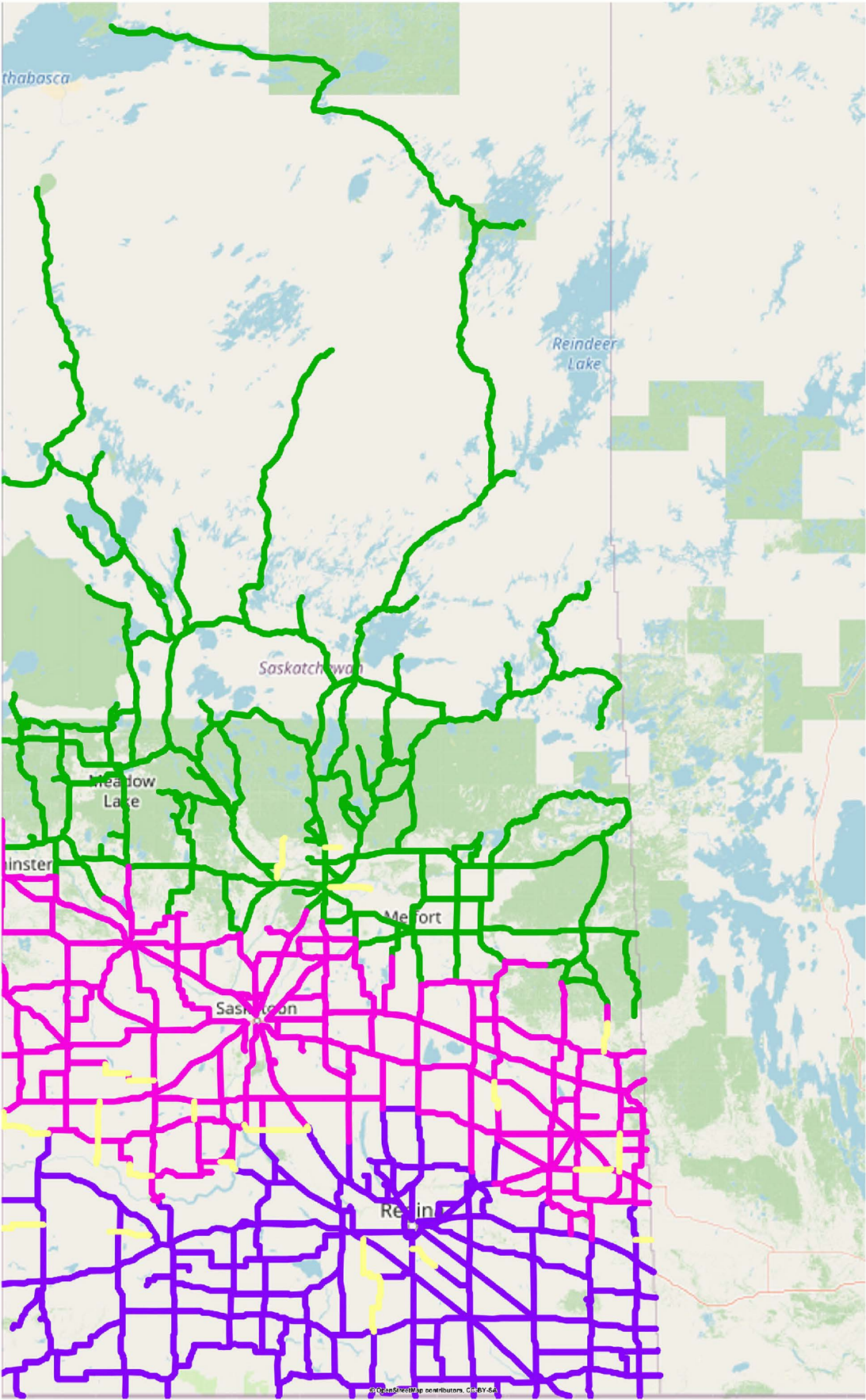
The following highway is restricted by Minister's ORDER to a maximum gross vehicle weight of 75% of primary highway weights, except during winter weight season, when winter secondary weights shall apply.

Hwy	From	To
240	Junction Highway 55	No. 240 - From Jct Hwy 55 to Prince Albert National Park SPECIAL RESTRICTIONS – 4.5 kg per mm (252 lbs/in) width of tire (manufacturer's stamped dimension) on any wheel to a maximum GVW of 22,686 kg (50,000 lbs), including the steering axle.

For detailed information on Rural Roads, call the local rural municipality or for Provincial Highway information email the Highway Hotline hotline@gov.sk.ca. The rural municipality administers and maintains the alternate haul routes. They are also responsible for issuing any overweight permits associated with the alternate haul routes.

Saskatchewan Ministry of Highways and Infrastructure provides seasonal highway restriction information on the Internet at: <http://www.saskatchewan.ca/truckingweights> under Special Weights.

Truckers can also contact the Saskatchewan Ministry of Highways, Trucking inquiry line at Toll free in Saskatchewan: 1-866-933-5290 Out of Saskatchewan: 306-933-5290 email: mhitrucking@gov.sk.ca



Winter Weight Season

-  In Effect
-  Not In Effect
-  Future Restrictions

Spring Weight Season

-  No Restrictions
-  Restricted
-  Future Restrictions

Special Weight Restrictions

-  Special Weight Restrictions

Notes