

WINTER WEIGHT SEASON 2025-2026

Nineth Order – 2025

Minister's Order Pursuant to section 35 of The Highways and Transportation Act, 1997, The Vehicle Weight and Dimension Regulations, 2010, permit heavier weights on public highways during the Winter Weight Season.

The Winter Weight Season is defined in s. 2 (ggg) of the regulations as commencing on November 16 of each year and ending on March 14 of the following year.

Section 2(2) of the regulations states that if the Minister considers it necessary to protect a public highway, the Minister may issue an order under section 35 of the Act restricting the Winter Weight Season for the highways mentioned in the order for the period specified in the order.

Pursuant to section 35 of "The Highways and Transportation Act, 1997" it is hereby ordered that, **effective 12:01 am Monday December 15, 2025.**

The Winter Weight Season will be in effect for the following Provincial Highways at 12:01 am Monday December 15, 2025:

- | | |
|------------------------------------------------|------------------------------------------------------|
| No. 1 From Manitoba Border to Alberta Border | No. 36 From U.S. Border to West Jct Hwy 18 |
| No. 2 From Rockglen to Liberty | No. 36 From Jct Hwy 13 to Jct Hwy 2 |
| No. 2 From U.S. Border to Rockglen | No. 37 From U.S. Border to Cabri |
| No. 4 From U.S. Border to Saskatchewan Landing | No. 39 From U.S. Border to Jct Hwy 1 |
| No. 6 From U.S. Border to Raymore | No. 42 From Jct Hwy 2 to Diefenbaker Lake |
| No. 8 From U.S. Border to North Jct Hwy 22 | No. 43 From Jct Hwy 2 to Jct Hwy 4 |
| No. 9 From U.S. Border to Jct Hwy 1 | No. 44 From 31.7 kms East of Alsask to Jct Hwy 7 @ |
| No. 10 From Balcarres to Balgonie | Alsask |
| No. 11 From Regina to Davidson | No. 46 From Balgonie to Regina |
| No. 13 From Manitoba Border to East Jct Hwy 36 | No. 47 From U.S. Border to Jct Hwy 247 |
| No. 13 From East Jct 36 to Limerick | No. 48 From Manitoba Border to Jct Hwy 9 |
| No. 13 From Limerick to Alberta Border | No. 48 From Jct Hwy 9 to White City |
| No. 15 From Raymore to Jct Hwy 20 | No. 54 From Jct Hwy 11 to Regina Beach |
| No. 18 From Manitoba Border to Jct Hwy 39 | No. 56 From Indian Head to Katepwa |
| No. 18 From Jct Hwy 47 to North Jct Hwy 6 | No. 56 From Katepwa to Jct Hwy 210 |
| No. 18 From South Jct Hwy 6 to East Jct Hwy 36 | No. 58 From Jct Hwy 18 to Jct Hwy 43 |
| No. 18 From West Jct Hwy 36 to Rockglen | No. 58 From North Limits of Gravelbourg to Jct Hwy 1 |
| No. 18 From Jct Hwy 2 to Val Marie | No. 99 From Craven to Jct Hwy 6 |
| No. 18 From Jct Hwy 4 to Jct Hwy 13 | No. 202 From Jct Hwy 2 to Buffalo Pound Park |
| No. 19 From Chaplin to Jct Hwy 44 | No. 209 From Jct Hwy 9 to 5 km West |
| No. 19 From Jct Hwy 18 to Jct Hwy 1 | No. 210 From Fort Qu'Appelle to Jct Hwy 10 |
| No. 20 From Lumsden to South Jct Hwy 15 | No. 220 From Jct Hwy 20 to Rowan's Ravine Park |
| No. 21 From U.S. Border to Jct Hwy 44 | No. 221 From Jct Hwy 21 to Cypress Hills Park Gate |
| No. 22 From Jct Hwy 35 to Jct Hwy 20 | No. 271 From Maple Creek to Fort Walsh |
| No. 28 From Jct Hwy 18 to Jct Hwy 13 | No. 306 From Jct Hwy 35 to Riceton |
| No. 32 From Jct Hwy 1 to Leader | No. 301 From Jct Hwy 1 to Buffalo Pound Park |
| No. 33 From Stoughton to Sedley | No. 306 From Riceton to Jct Hwy 6 * (8 000 kgs year |
| No. 33 From Sedley to Regina | round) |
| No. 34 From U.S. Border to Jct Hwy 13 | No. 310 From Balcarres to Ituna |
| No. 35 From U.S. Border to Lipton | No. 318 From Carnduff to Alida |

WINTER WEIGHT SEASON 2025-2026

No. 321 From Liebenthal to Alberta Border
No. 322 From Jct Hwy 20 to Jct Hwy 220
No. 332 From Jct Hwy 32 to 7.1 km W. of Hwy 32*
(Max GVW 8 000 kgs)
No. 343 From Jct Hwy 4 to Simmie
No. 334 From Jct Hwy 13 to Jct Hwy 39* (Max GVW
8 000 kgs from Jct Hwy 13 to Avonlea)
No. 339 From Jct Hwy 334 to Jct Hwy 39* (Max GVW
8 000 kgs except from 11.4km to 21.2km west
of Jct Hwy 334)

No. 350 From U.S. Border to Torquay
No. 354 From Jct Hwy 11 to Dilke
No. 358 From Wood Mountain to Limerick
No. 361 From Manitoba Border to Jct Hwy 47
No. 363 From Moose Jaw to Old Wives
No. 363 From Old Wives to Jct Hwy 4
No. 364 From Jct Hwy 10 to Balgonie
No. 367 From Jct Hwy 42 to Jct Hwy 19
No. 377 From Jct Hwy 28 to Jct Hwy 6
No. 379 From McMahon to Jct Hwy 4

**The Winter Weight Season will be in effect for the following Rural Municipalities at 12:01 am Monday December 15, 2025.
(RM's that have opted out of Winter Weights will not appear in the Order):**

No. 1 ARGYLE
No. 2 MOUNT PLEASANT
No. 5 ESTEVAN
No. 6 CAMBRIA
No. 7 SOURIS VALLEY
No. 8 LAKE ALMA
No. 9 SURPRISE VALLEY
No. 10 HAPPY VALLEY
No. 11 HART BUTTE
No. 12 POPLAR VALLEY
No. 17 VAL MARIE
No. 18 LONE TREE
No. 19 FRONTIER
No. 31 STORTHOAKS
No. 32 RECIPROCITY
No. 34 BROWNING
No. 35 BENSON
No. 36 CYMRI
No. 37 LOMOND
No. 38 LAURIER
No. 39 THE GAP
No. 40 BENGOUGH
No. 42 WILLOW BUNCH
No. 43 OLD POST
No. 44 WAVERLEY
No. 45 MANKOTA
No. 46 GLEN MCPHERSON
No. 49 WHITE VALLEY
No. 51 RENO
No. 61 ANTLER
No. 63 MOOSE MOUNTAIN
No. 64 BROCK
No. 65 TECUMSEH
No. 66 GRIFFIN
No. 67 WEYBURN
No. 68 BROKEN SHELL
No. 69 NORTON
No. 70 KEY WEST
No. 71 EXCEL

No. 72 LAKE OF THE RIVERS
No. 73 STONEHENGE
No. 74 WOOD RIVER
No. 75 PINTO CREEK
No. 76 AUVERGNE
No. 77 WISE CREEK
No. 78 GRASSY CREEK
No. 79 ARLINGTON
No. 91 MARYFIELD
No. 92 WALPOLE
No. 93 WAWKEN
No. 94 HAZELWOOD
No. 95 GOLDEN WEST
No. 96 FILMORE
No. 97 WELLINGTON
No. 98 SCOTT
No. 99 CALEDONIA
No. 100 ELMSTHORPE
No. 101 TERRELL
No. 102 LAKE JOHNSTON
No. 103 SUTTON
No. 104 GRAVELBOURG
No. 105 GLEN BAIN
No. 106 WHISKA CREEK
No. 107 LAC PELLETIER
No. 108 BONE CREEK
No. 121 MOOSOMIN
No. 122 MARTIN
No. 123 SILVERWOOD
No. 124 KINGSLEY
No. 125 CHESTER
No. 126 MONTMARTRE
No. 127 FRANCIS
No. 128 LAJORD
No. 129 BRATT'S LAKE
No. 130 REDBURN
No. 131 BAILDON
No. 132 HILLSBOROUGH
No. 133 RODGERS

WINTER WEIGHT SEASON 2025-2026

| | |
|------------------------------|------------------------------|
| No. 134 SHAMROCK | No. 171 FOX VALLEY |
| No. 135 LAWTONIA | No. 187 NORTH QU'APPELLE |
| No. 136 COULEE | No. 189 LUMSDEN |
| No. 137 SWIFT CURRENT | No. 190 DUFFERIN |
| No. 138 WEBB | No. 191 MARQUIS |
| No. 139 GULL LAKE | No. 193 EYEBROW |
| No. 141 BIG STICK | No. 194 ENFIELD |
| No. 142 ENTERPRISE | No. 216 TULLYMET |
| No. 151 ROCANVILLE | No. 218 CUPAR |
| No. 152 SPY HILL | No. 219 LONGLAKETON |
| No. 155 WOLSELEY | No. 220 MCKILLOP |
| No. 156 INDIAN HEAD | No. 221 SARINA |
| No. 157 SOUTH QU'APPELLE | No. 222 CRAIK |
| No. 158 EDENWOLD | No. 223 HURON |
| No. 159 SHERWOOD | No. 224 MAPLE BUSH |
| No. 160 PENSE | No. 229 MIRY CREEK |
| No. 161 MOOSE JAW | No. 230 CLINTWORTH |
| No. 162 CARON | No. 231 HAPYPLAND |
| No. 163 WHEATLANDS | No. 232 DEER FORKS |
| No. 164 CHAPLIN | No. 250 LAST MOUNTAIN VALLEY |
| No. 165 MORSE | No. 252 ARM RIVER |
| No. 167 SASKATCHEWAN LANDING | No. 253 WILLNER |
| No. 168 RIVERSIDE | No. 261 CHESTERFIELD |
| No. 169 PITTEVILLE | No. 279 MOUNT HOPE |

The following Rural Municipalities have opted out of the Winter Weight season and will be removed from further Winter Weight Orders this season, **effective immediately. (RM's that have opted out of Winter Weights will not appear in the Order)**

No. 456 ARBORFIELD

Signed on behalf of the Minister on this 12th day of December 2025.



Lana Eering
Government of Saskatchewan
Ministry of Highways
Manager, Highway Hotline/Emergency Planning Officer

WINTER WEIGHT SEASON 2025-2026

The Winter Weight Season **is in effect** for the following Provincial Highways:

MINISTER'S ORDER No: 80-2024-WI2-PILOT

ORDER for Increasing Weight Designation on Provincial Highway No. 80.

Pursuant to section 35.1 of *The Highways and Transportation Act, 1997*, the Minister hereby Orders: effective each year during the officially designated winter weight season for the Yorkton District effective until March 15, 2027; this Order authorizes any person, vehicle or class of vehicles to operate at the weights set for primary highways by *The Vehicle Weight and Dimension Regulations, 2010*, on Provincial Highway No. 80 from its junction with Provincial Highway No. 16 to its junction with Provincial Highway No. 10.

Outside of the designated winter weight season Provincial Highway No. 80 will revert back to a 8,000 kilogram restriction by Minister's Order signed July 6, 2001. **The 15 Kilometre Rule does not apply under the Order.**

MINISTER'S ORDER No: 49-2024-WI3-PILOT

ORDER for Increasing Weight Designation on Provincial Highway No. 49.

Pursuant to section 35.1 of *The Highways and Transportation Act, 1997*, the Minister hereby Orders: effective beginning December 15, 2024 and ending March 15, 2025,

- beginning June 15 2025 and ending March 15, 2026,
- beginning June 15 2026 and ending March 15, 2027,
- beginning June 15 2027 and ending March 15, 2028,
- and beginning June 15 and ending March 15, 2029.

this Order authorizes any person, vehicle or class of vehicles to operate at the weights set for primary highways *The Vehicle Weight and Dimension Regulations, 2010*, on Provincial Highway No. 49 from its junction with Provincial Highway No. 8, near Pelly, eastward to the Saskatchewan/Manitoba provincial border. **The 15 Kilometre Rule does not apply under the Order.**

No. 2 From Weyakwin to La Ronge
No. 2 From St. Louis to Weyakwin
No. 3 From Manitoba Border to Kinistino
No. 3 From Kinistino to Jct Hwy 4
No. 3 Jct Hwy 4 to Jct Hwy 26
No. 3 Jct Hwy 26 to Jct Hwy 17
No. 4 From Glaslyn to Jct Hwy 224
No. 4 From Saskatchewan Landing to Glaslyn
No. 5 From Manitoba Border to Quill Lake
No. 5 From Quill Lake to Saskatoon
No. 6 From Raymore to Naicam
No. 6 From Naicam to Jct Hwy 55
No. 7 From Saskatoon to Delisle
No. 7 From Delisle to Alberta Border
No. 8 From South Jct 22 to Forest Boundary* (Norquay to Swan Plain – 8,000 kgs if above -6 degrees)
No. 9 From Jct Hwy 983 to Manitoba Border
No. 10 From Manitoba Border to Balcarres
No. 11 From MacDowall to Prince Albert
No. 11 From Davidson to MacDowall
No. 12 From Saskatoon to Blaine Lake
No. 12 From Blaine Lake to Shell Lake
No. 14 From Saskatoon to Asquith
No. 14 From Asquith to Alberta Border
No. 15 From Jct Hwy 9 to Jct Hwy 6
No. 15 From Jct Hwy 20 to Jct Hwy 4
No. 15 From Jct Hwy 42 to Jct Hwy 4

No. 16 From Manitoba Border to Dafoe
No. 16 From Jct Hwy 6 to Langham
No. 16 From Langham to Lloydminster
No. 17 From Jct Hwy 14 to Onion Lake
No. 19 From Jct Hwy 44 to Jct Hwy 15
No. 20 From South Jct Hwy 15 to Jct Hwy 320
No. 20 From Jct Hwy 320 to Jct Hwy 3
No. 21 From Glidden to South Jct Hwy 303
No. 21 From South Jct Hwy 303 to Meadow Lake Park
No. 22 From Manitoba Border to Jct Hwy 10
No. 23 From Jct Hwy 9 to Somme
No. 23 From Somme to Jct Hwy 38
No. 23 From Jct Hwy 38 to Jct Hwy 55
No. 25 From Jct Hwy 3 to Jct Hwy 2
No. 26 From Jct Hwy 4 to Vawn
No. 26 From Vawn to Goodsoil
No. 27 From Jct Hwy 2 to Jct Hwy 41
No. 29 From Wilkie to Battleford
No. 31 From Herschel Access to Grid 656
No. 31 From Plenty to Jct Hwy 14
No. 35 From Lipton to Jct Hwy 349
No. 35 From Jct Hwy 349 to Roads End
No. 38 From Jct Hwy 5 to Jct Hwy 23
No. 40 From Blaine Lake to Alberta Border
No. 40 From Jct Hwy 3 to Blaine Lake
No. 41 From Melfort to Jct Hwy 20
No. 41 From Jct Hwy 20 to Jct Hwy 5

WINTER WEIGHT SEASON 2025-2026

| | |
|----------------------------------------------------------------------------------------------|---------------------------------------------------------------------------------------------|
| No. 42 From Diefenbaker Lake to Jct Hwy 342 | No. 316 From Jct Hwy 16 to Jct Hwy 5 |
| No. 42 From Dinsmore to Jct Hwy 15 | No. 317 From Jct Hwy 7 to Jct Hwy 31 |
| No. 42 From Jct 342 to Dinsmore | No. 320 From Jct Hwy 20 to Jct Hwy 2 |
| No. 44 From Jct Hwy 19 to East Jct Hwy 42 | No. 324 From Jct Hwy 378 to Mayfair |
| No. 44 From Dinsmore to South Jct Hwy 21 | No. 335 From Arborfield to Gronlid |
| No. 45 From Lucky Lake to Delisle | No. 340 From Jct Hwy 16 to Jct Hwy 40 |
| No. 47 From Jct Hwy 247 to Preeceville | No. 342 From Jct Hwy 42 to Jct Hwy 4 |
| No. 49 From Manitoba Border to Jct Hwy 35 | No. 342 From Grid 647 to Plato Access |
| No. 51 From Jct Hwy 4 to Alberta Border | No. 349 From Jct Hwy 38 to Archerwill |
| No. 52 From Yorkton to Jct Hwy 15 | No. 349 From Jct Hwy 35 to Jct Hwy 6 |
| No. 55 From Jct Hwy 9 to Smeaton | No. 355 From Meath Park to Sturgeon Lake Reserve |
| No. 55 From Smeaton to Green Lake | No. 357 From Togo to Jct Hwy 8 |
| No. 55 From Green Lake to Alberta Border | No. 365 From Watrous to Jct Hwy 16 |
| No. 57 From Manitoba Border to Jct Hwy 5 | No. 368 From Jct Hwy 5 to St. Brieux |
| No. 60 From Pike Lake to Jct Hwy 7 | No. 368 From St. Brieux to Beatty |
| No. 80 From Esterhazy to Churchbridge | No. 369 From Jct Hwy 10 to Togo |
| No. 102 From La Ronge to Southend | No. 373 From Jct Hwy 42 to Jct Hwy 45 |
| No. 106 From Jct Hwy 55 to Creighton | No. 374 From Jct Hwy 21 to Jct Hwy 14 |
| No. 120 From Jct Hwy Hwy 913- Jct Hwy 106 | No. 376 From Jct Hwy 14 to Jct Hwy 324 |
| No. 120 From Jct Hwy 913 to Jct Hwy 55 | No. 378 From Jct Hwy 4 to Jct Hwy 324 |
| No. 123 From Jct Hwy 55 to Cumberland House | No. 378 From Jct Hwy 324 to Jct Hwy 3 |
| No. 135 From Jct Hwy 106 to Sandy Bay | No. 381 From Manitoba Border to Jct Hwy 80 |
| No. 155 From Green Lake to La Loche | No. 397 From Jct Hwy 16 to Allan |
| No. 165 From Jct Hwy 106 to North Jct Hwy 2 | No. 903 From Jct Hwy 55 to 74 km North of Jct Hwy 965 |
| No. 165 From South Jct Hwy 2 to 38 KM East of Jct Hwy 155 | No. 904 From Jct Hwy 4 to 30.18 km north of Jct Hwy 4 |
| No. 165 From 38 KM East of Jct Hwy 155 to Jct Hwy 155 | No. 905 From Jct Hwy 102 to Shasko Bay * (Max GVW 41 500 kgs) |
| No. 167 From Sturgeon Weir River to Creighton | No. 908 From Jct Hwy 155 to Ile-a-la-Crosse |
| No. 201 From Jct Hwy 1 to Jct Hwy 247 | No. 909 From Jct Hwy 155 to Turnor Lake |
| No. 211 From Jct Hwy 11 to Blackstrap Prov. Park | No. 910 From Jct Hwy 165 to Besnard Lake |
| No. 212 From Jct Hwy 11 to Fort Carlton Park | No. 911 From Jct Hwy 106 to Deschambault Lake |
| No. 224 From Jct Hwy 4 to Jct Hwy 26 | No. 912 From Jct Hwy 913 to Wapawekka Lake |
| No. 225 From Jct Hwy 2 to Jct Hwy 312 | No. 913 From Jct Hwy 106 to Jct Hwy 912 |
| No. 229 From Jct Hwy 9 to Jct Hwy 47 | No. 913 From Jct Hwy 912 to Jct Hwy 120 |
| No. 240 From Jct Hwy 55 to Prince Albert Ntl Park South Boundary* (Winter secondary weights) | No. 914 From Jct Hwy 165 to Key Lake Minesite |
| No. 255 From Jct Hwy 55 to Tobin Lake | No. 916 From Jct Hwy 2 to Jct Hwy 924 |
| No. 263 From Jct Hwy 2 to Prince Albert Ntl Park Boundary | No. 915 From Jct Hwy 102 to Stanley Mission |
| No. 264 From Jct Hwy 2 to Prince Albert Ntl Park Boundary | No. 918 From Jct Hwy 165 to Patuanak |
| No. 265 From Jct Hwy 120 to Jct Hwy 926 | No. 919 From Jct Hwy 21 to Primrose Lake* (Cold River Bridge - No winter weights on Bridge) |
| No. 302 From Prince Albert to 30 km W. of Prince Albert | No. 920 From Jct Hwy 106 to Jct Hwy 932 |
| No. 303 From Jct Hwy 26 Turtleford to Jct Hwy 21 | No. 922 From Bodmin to Jct Hwy 916 |
| No. 303 From Jct Hwy 21 to Jct Hwy 16 | No. 924 From Jct Hwy 55 to Dore Lake |
| No. 304 From Meadow Lake to Loon Lake | No. 925 From Jct Hwy 155 to Michel |
| No. 305 From Jct Hwy 11 to Jct Hwy 16 | No. 926 From Jct Hwy 120 to Jct Hwy 969 |
| No. 307 From Jct Hwy 7 to Jct Hwy 21 | No. 927 From Jct Hwy 912 to East Trout Lake |
| No. 309 From Rhein to Jct Hwy 9 | No. 931 From Jct Hwy 926 to Jct Hwy 963 |
| No. 310 From Ituna to Grid 743 | No. 942 From Jct Hwy 55 to Roads End |
| No. 310 From Grid 743 to Jct Hwy 16 * (8 000 kgs year-round) | No. 943 From Jct Hwy 942 to Meetoos |
| No. 310 From Foam Lake to Jct Hwy 5 | No. 945 From Jct Hwy 24 to Jct Hwy 943 |
| No. 312 From Jct Hwy 2 to Jct Hwy 12* (Gabriel Dumont Bridge – secondary weights year-round) | No. 946 From Jct Hwy 943 to Leoville Grid |
| | No. 950 From Jct Hwy 224 to Jct Hwy 21 |

WINTER WEIGHT SEASON 2025-2026

No. 951 From Jct Hwy 904 to Jct Hwy 903
No. 953 From Jct Hwy 2 to Jct Hwy 263
No. 955 From La Loche to Cluff Lake Mine * (Douglas River
Bridge - Max GVW 41 500 kgs)
No. 956 From Jct Hwy 155 to Alberta Border

No. 965 From Jct Hwy 155 to Jct Hwy 903
No. 969 From Jct Hwy 2 to Jct Hwy 165
No. 980 From Woody Lake Rd. N. of Arran to Armit
No. 982 From Forest Boundary to Jct Hwy 9
No. 983 From Jct Hwy 982 to Jct Hwy 9

The Winter Weight Season is in effect for the following Rural Municipalities. (RM's that have opted out of Winter Weights will not appear in the Order):

No. 153 WILLOWDALE
No. 154 ELCAPO
No. 184 GRAYSON
No. 185 MCLEOD
No. 186 ABERNETHY
No. 211 CHURCHBRIDGE
No. 213 SALTCOATS
No. 214 CANA
No. 215 STANLEY
No. 217 LIPTON
No. 225 CANAAN
No. 226 VICTORY
No. 228 LACADENA
No. 241 CALDER
No. 243 WALLACE
No. 244 ORKNEY
No. 245 GARRY
No. 246 ITUNA BON ACCORD
No. 248 TOUCHWOOD
No. 251 BIG ARM
No. 254 LOREBURN
No. 255 COTEAU
No. 256 KING GEORGE
No. 257 MONET
No. 259 SNIPE LAKE
No. 260 NEWCOMBE
No. 271 COTE
No. 273 SLIDING HILLS
No. 274 GOOD LAKE
No. 275 INSINGER
No. 276 FOAM LAKE
No. 277 EMERALD
No. 280 WREFORD
No. 281 WOOD CREEK
No. 282 MCCRANEY
No. 283 ROSEDALE
No. 284 RUDY
No. 285 FERTILE VALLEY
No. 286 MILDEN
No. 287 ST. ANDREWS
No. 288 PLEASANT VALLEY
No. 301 ST. PHILIPS

No. 303 KEYS
No. 304 BUCHANAN
No. 305 INVERMAY
No. 307 ELFROS
No. 308 BIG QUILL
No. 309 PRAIRIE ROSE
No. 310 USBORNE
No. 312 MORRIS
No. 313 LOST RIVER
No. 314 DUNDURN
No. 315 MONTROSE
No. 316 HARRIS
No. 317 MARRIOTT
No. 318 MOUNTAIN VIEW
No. 319 WINSLOW
No. 320 OAKDALE
No. 321 PRAIRIEDALE
No. 331 LIVINGSTON
No. 333 CLAYTON
No. 334 PREECEVILLE
No. 335 HAZEL DELL
No. 336 SASMAN
No. 337 LAKEVIEW
No. 338 LAKESIDE
No. 339 LEROY
No. 340 WOLVERINE
No. 341 VISCOUNT
No. 342 COLONSAY
No. 343 BLUCHER
No. 344 CORMAN PARK
No. 345 VANSKOY
No. 346 PERDUE
No. 347 BIGGAR
No. 349 GRANDVIEW
No. 350 MARIPOSA
No. 351 PROGRESS
No. 352 HEART'S HILL
No. 366 KELVINGTON
No. 368 SPALDING
No. 369 ST. PETER
No. 370 HUMBOLDT
No. 371 BAYNE

WINTER WEIGHT SEASON 2025-2026

No. 372 GRANT
No. 373 ABERDEEN
No. 376 EAGLE CREEK
No. 377 GLENSIDE
No. 378 ROSEMOUNT
No. 379 REFORD
No. 380 TRAMPING LAKE
No. 381 GRASS LAKE
No. 382 EYE HILL
No. 394 HUDSON BAY
No. 395 PORCUPINE
No. 397 BARRIER VALLEY
No. 398 PLEASANTDALE
No. 399 LAKE LENORE
No. 400 THREE LAKES
No. 401 HOODOO
No. 402 FISH CREEK
No. 403 ROSTHERN
No. 404 LAIRD
No. 405 GREAT BEND
No. 406 MAYFIELD
No. 409 BUFFALO
No. 410 ROUND VALLEY
No. 411 SENLAC
No. 426 BJORKDALE
No. 427 TISDALE
No. 428 STAR CITY
No. 429 FLETT'S SPRINGS
No. 430 INVERGORDON
No. 431 ST. LOUIS
No. 434 BLAINE LAKE
No. 435 REDBERRY
No. 436 DOUGLAS
No. 437 NORTH BATTLEFORD

No. 438 BATTLE RIVER
No. 439 CUT KNIFE
No. 440 HILLSDALE
No. 457 CONNAUGHT
No. 459 KINISTINO
No. 460 BIRCH HILLS
No. 461 PRINCE ALBERT
No. 463 DUCK LAKE
No. 464 LEASK
No. 466 MEETING LAKE
No. 467 ROUND HILL
No. 468 MEOTA
No. 469 TURTLE RIVER
No. 470 PAYNTON
No. 471 ELDON
No. 486 MOOSE RANGE
No. 487 NIPAWIN
No. 488 TORCH RIVER
No. 490 GARDEN RIVER
No. 491 BUCKLAND
No. 493 SHELLBROOK
No. 494 CANWOOD
No. 496 SPIRITWOOD
No. 497 MEDSTEAD
No. 498 PARKDALE
No. 499 MERVIN
No. 501 FRENCHMAN BUTTE
No. 520 PADDOCKWOOD
No. 521 DISTRICT OF LAKELAND
No. 555 BIG RIVER
No. 561 LOON LAKE
No. 588 MEADOW LAKE
No. 622 BEAVER RIVER

WINTER WEIGHT SEASON 2025-2026

The following section is not part of the Order but is appended as **INFORMATION:**

Special Weight Restrictions on Selected Provincial Highways.

The following highways are subject to reduced weights, year-round, by regulation in accordance with the *Vehicle Weight and Dimension Regulations, 2010*

| Hwy | From | To | Description |
|-----|--------------------------------------------|------------------------------------|-----------------------|
| 955 | South abutment of the Douglas River Bridge | Northern most limit of Highway 955 | Maximum GVW 41 500 kg |

The following **BRIDGES** are restricted by Minister's **ORDER** to a maximum gross vehicle weight of **Secondary Weights** year-round. **Winter Weights** are not allowed.

| Hwy | Bridge Location Description |
|-----------------------------|---------------------------------------------------------------------------------------------------------------------------------------------------------------------------------------------------------------------------------------|
| 2 | Bridge over Little Red River from Southern Bridge Abutment to Northern Bridge Abutment. Bridge is located approximately 4.4 km south of Jct. with Hwy 355 and Hwy 2 near Spruce Home. Bridge is located on East Frontage Road. |
| 3 | Bridge over Red Deer River from Eastern Bridge Abutment to Western Bridge Abutment located approximately .5km west of Erwood, Sk. |
| 4 Metinota Access | Bridge over Jackfish Narrows from Eastern Bridge Abutment to Western Bridge Abutment. Bridge is located in access road approximately 3.1km west of the Jct. with Hwy 4. Bridge is located on access road. |
| 312 Gabriel Dumont Bridge | Truss Bridge over South Saskatchewan River from Eastern Bridge Abutment to Western Bridge Abutment. |
| 919 | Bridge over Martineau River from Southern Bridge Abutment to Northern Bridge Abutment. Bridge is located approximately 39.5km northwest of the Jct. with Hwy 21 and Hwy 950 |
| 935 | Bridge over Morin River from the Southern Bridge Abutment to the Northern Bridge Abutment. Bridge is located approximately 7km north of the Jct. with Hwy 165 and Hwy 935. |
| 955 Clearwater Truss Bridge | Truss Bridge over Clearwater River from Southern Bridge Abutment to Northern Bridge Abutment. Bridge is located approximately - 62 km north of Jct 155 and 955 to the Clearwater Bridge. |
| 980 Elbow Lake Access | Bridge over Midnight Creek from Eastern Bridge Abutment to Western Bridge Abutment. Bridge is located approximately .3 km west of Elbow Lake, Sk.. The bridge is located on Spirit Lake/Elbow Lake access road. |

The following **BRIDGES** are restricted by Minister's **ORDER** to a maximum gross vehicle weight of **Primary Weights** year-round. **Winter Weights** are not allowed.

| Hwy | Bridge Location Description |
|-----|---------------------------------------------------------------------------------------------------------------------------------------------------------------|
| 2 | Southbound Bridge over Hwy 1 from Southern Bridge Abutment to Northern Bridge Abutment. Bridge is located north of Moose Jaw Sk. at Jtc. with Hwy 1 and Hwy 2 |
| 6 | Bridge over Barrier River Overflow from Southern Bridge Abutment to Northern Bridge Abutment. Bridge is located approximately 25.7 km south of Melfort, Sk. |

The following highways are restricted by Minister's **ORDER** to a maximum gross vehicle weight of **8 000 kilograms** year-round.

| Highway | From | To |
|--------------------------------------------|-------------------------------------------|-------------------------------------|
| 1 Caron Access | Jct Hwy 1 | Hamlet of Caron |
| 1 Grand Coulee Access | Jct Hwy 1 | Village of Grand Coulee |
| 2 Eastside Service Road near Prince Albert | Jct Boundary Street East Service Rd north | Jct Township Road (approx. 2.4 kms) |

WINTER WEIGHT SEASON 2025-2026

| | | |
|------------------------------------|------------------------------------------------------------------------------------------------------------------|--------------------------------------------------------------------------------------------------------------------------------------------|
| 4 Blumenhof Access | Jct Hwy 4 east | Blumenhof |
| 6 Leroy Access | Jct Hwy 6 | Town of Leroy |
| 8 Tantallon Access | Jct. Hwy 8 | Village of Tantallon |
| 12 Hepburn Access | Jct. Hwy 12 | Village of Hepburn |
| 12 Waldheim Access | Jct. Hwy 12 | 100 meters west of the west boundary of NW 15-42-5 W3M in the town of Waldheim. |
| 13 Bellegarde Access | Jct. Hwy 13 | Bellegarde |
| 13 Forget Access | Jct. Hwy 13 | The Village of Forget |
| 15 | Jct. Hwy 16 | Jct. Hwy 9 |
| 16 Bradwell Access | Jct. Hwy 16 | Village of Bradwell |
| 21 Mendham Access | Jct Hwy 21 Mendham Access | Intersection with the North-South portion of the Municipal Alternate Truck Route |
| 30 | Eston Regional Park located at the southwest corner of Section 20, Township 23, Range 20, West 3rd Meridian | The jct. of municipal Hwy located at the north-east corner of Section 34, Township 28, Range 20, West 3rd Meridian |
| 31 | Jct. Hwy 4 | Herschel Access Road |
| 31 | Grid 656 at NW corner of Section 34, Township 31, Range 17, west of the 3rd Meridian | The intersection of the Plenty grid at the NW corner, Section 21, Township 32, Range 19, west of the 3rd Meridian |
| 39 Bienfait Access | Jct Hwy 39 | Jct Hwy 18 (In the Town of Bienfait) |
| 40 David Laird Campsite Road | Jct No. Hwy 40 | Jct Hwy No. 16 |
| 41 Alvena Access | Jct Hwy 41 | 2nd Avenue in Village of Alvena |
| 42 | Jct Hwy 42 - Keeler Service Road/Railway Ave. S. | Keeler Service Road/Railway Ave. to RM Road 643 |
| 42 (1) | Jct Hwy 373 | Jct Hwy 45 in the Town of Lucky Lake |
| 42 | From its Jct with Hwy 44 (km 43.68) | its Jct with Hwy 15 (km 59.92), for a total of 16.2 km. |
| 44(1) | Jct Hwy 19 | Junction with the Danielson Provincial Park Access located in the southeast of Section 32, Township 26, Range 6, West of the 3rd Meridian. |
| 4(1) | Jct Hwy 21 | Westerly to the Jct with the municipal road located in the NE 1/4 of Section 24, Township 26, Range 27, west of the 3rd Meridian |
| 44(1) | Jct with the municipal road located at the SW 1/4 of Section 26, Township 26, Range 27, west of the 3rd Meridian | Jct with the municipal road located east of Section 31, Township 26, Range 27, west of the 3rd Meridian |
| 306 | Riceton | Jct Hwy 6 |

WINTER WEIGHT SEASON 2025-2026

| | | |
|---------------------|---------------------------|------------------------------------------------------------------------------------------------|
| 308 | Jct Hwy 8 | Jct with Primary Grid 600 |
| 310 | Jct of Grid 743 | Jct of Hwy No. 16 |
| 312 Laird Access | Jct Hwy 312 | The Village of Laird |
| 332 | 7.1 km west of Jct Hwy 32 | The Village of Hazlet except for that portion between the east and west Jct of Hwy 37 |
| 334 | Jct Hwy 13 | 3.3 km south of Jct Hwy 339 |
| 339 | Village of Avonlea | Jct. of Hwy 39 except for that portion from 11.4 km west of Avonlea to 21.2 km west of Avonlea |
| 342 | Jct Hwy 4 | Jct of Primary Grid 647 north of Lacadena |
| 371 | Jct Hwy 21 | Alberta Border |

The following highways are restricted by Minister's ORDER to a maximum gross vehicle weight of 8 000 kilograms from March 1st to November 30th each year.

| Hwy | From | To |
|-----|--------------------------------------------------------------------------------------------------|-------------------------------------------------------------------------------------------------------------------------------------------|
| 302 | Cecil Ferry Road at the SE corner of Section 22, Township 48, Range 24, west of the 2nd Meridian | Jct of the municipal road located at SE corner of Section 5, Township 49, Range 22, west of Second Meridian (located by the Weldon Ferry) |

The following access road is restricted by Minister's ORDER to a maximum gross vehicle weight of 8 000 kilograms from March 1st to November 30th each year.

| Hwy | From | To |
|----------------------|-----------|----------------------------------------------------------------------------|
| 2 Paddockwood Access | Jct Hwy 2 | Grid Road intersection NE Section 23, Township 52, Range 25, W2nd Meridian |

The following highway is restricted by Minister's ORDER to a maximum gross vehicle weight of 8 000 kilograms from March 15th to November 15th each year and *when the ambient temperature is above -6°C*.

| Hwy | From | To |
|-----|------------------------------------------------|---------------------------------------------------------------------|
| 8 | 0.5 km North of Junction Highway 49 at Norquay | The community of Swan Plain at the south boundary of SE 27-36-1-W2M |

The following Access Road is restricted by Minister's ORDER to a maximum gross vehicle weight of 8 000 kilograms from February 24 to November 15th each year and *when the ambient temperature is above -6°C*.

| Hwy | From | To |
|----------------------|----------------------------------------------------------------------------------|-----------------------------------------------------------------------------------|
| 35 Aylsham Access | Hwy 35 (NW corner of section 32, township 48, range 14, west of second Meridian) | Aylsham (NE corner of section 34, township 48, range 13, west of second Meridian) |

The following highway is restricted by Minister's ORDER to a maximum gross vehicle weight of 75% of primary highway weights, except during winter weight season, when winter secondary weights shall apply.

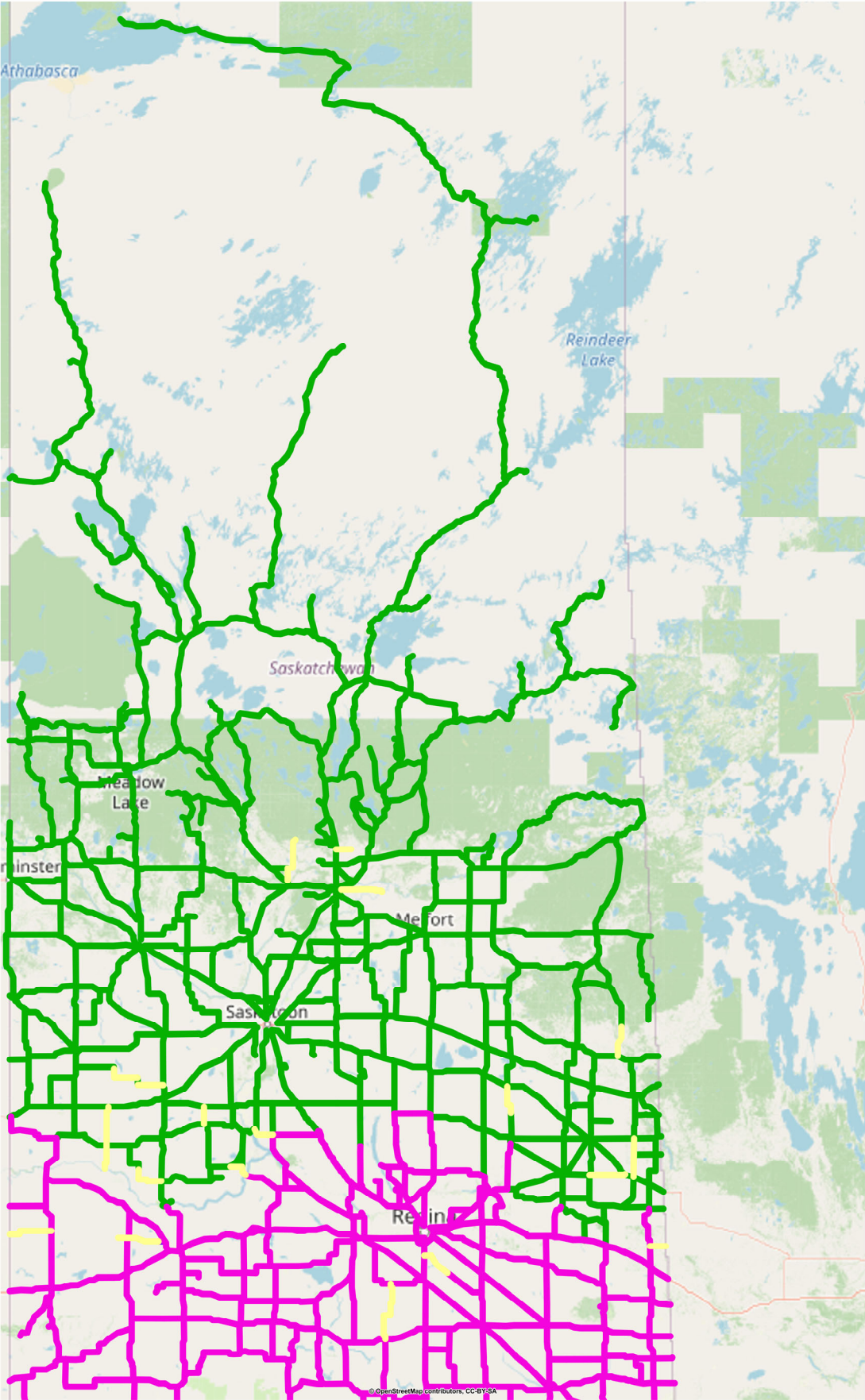
WINTER WEIGHT SEASON 2025-2026

| Hwy | From | To |
|-----|---------------------|---------------------------------------------------------------------------------------------------------------------------------------------------------------------------------------------------------------------------------------------------|
| 240 | Junction Highway 55 | No. 240 - From Jct Hwy 55 to Prince Albert National Park SPECIAL RESTRICTIONS – 4.5 kg per mm (252 lbs/in) width of tire (manufacturer's stamped dimension) on any wheel to a maximum GVW of 22,686 kg (50,000 lbs), including the steering axle. |

For detailed information on Rural Roads, call the local rural municipality or for Provincial Highway information email the Highway Hotline hotline@gov.sk.ca. The rural municipality administers and maintains the alternate haul routes. They are also responsible for issuing any overweight permits associated with the alternate haul routes.

Saskatchewan Ministry of Highways and Infrastructure provides seasonal highway restriction information on the Internet at: <http://www.saskatchewan.ca/truckingweights> under Special Weights.

Truckers can also contact the Saskatchewan Ministry of Highways, Trucking inquiry line at Toll free in Saskatchewan: 1-866-933-5290 Out of Saskatchewan: 306-933-5290 email: mhitrucking@gov.sk.ca



Winter Weight Season

- In Effect
- Not In Effect
- Future Restrictions

Spring Weight Season

- No Restrictions
- Restricted
- Future Restrictions

Special Weight Restrictions

- Special Weight Restrictions

Notes